



NOTTINGHAM CITY COUNCIL

ARBORETUM, DUNKIRK AND LENTON, RADFORD AND PARK AREA COMMITTEE

Date: Wednesday 19 February 2014

Time: 5.30 pm

Place: Ground Floor Committee Room - Loxley House, Station Street, Nottingham, NG2 3NG

Councillors are requested to attend the above meeting to transact the following business

Deputy Chief Executive/Corporate Director for Resources

Constitutional Services Officer: Laura Wilson **Direct Dial:** 0115 8764301

AGENDA

Pages

- | | | |
|----------|---|----------|
| 1 | APOLOGIES FOR ABSENCE | |
| 2 | DECLARATIONS OF INTEREST | |
| 3 | MINUTES
Last meeting held on 20 November 2013 for confirmation | 3 - 12 |
| 4 | WARD PERFORMANCE - QUARTER 3 2013/14
Report of Director of Neighbourhood Services | 13 - 92 |
| 5 | LENTON TRIANGLE/DRIVES RESIDENTS' SURVEY RESULTS
Presentation by Ben Haddock, Community Reps | |
| 6 | NEW SCHOOL ENFORCEMENT PROGRAMME
Verbal update by Susan Thorpe, Senior Officer, Traffic Management | |
| 7 | ENVIRONMENTAL SUBMISSIONS FROM NOTTINGHAM CITY HOMES (NCH)
Report of Chief Executive, Nottingham City Homes | 93 - 96 |
| 8 | AREA CAPITAL FUND 2013/15 PROGRAMME
Report of Director of Neighbourhood Services | 97 - 104 |

IF YOU NEED ANY ADVICE ON DECLARING AN INTEREST IN ANY ITEM ON THE AGENDA, PLEASE CONTACT THE CONSTITUTIONAL SERVICES OFFICER SHOWN ABOVE, IF POSSIBLE BEFORE THE DAY OF THE MEETING

CITIZENS ATTENDING MEETINGS ARE ASKED TO ARRIVE AT LEAST 15 MINUTES BEFORE THE START OF THE MEETING TO BE ISSUED WITH VISITOR BADGES

COUNCILLORS ARE REMINDED THAT THERE WILL BE A PRE-MEETING AT 4.45 PM IN LH3.19

ARBORETUM, DUNKIRK AND LENTON, RADFORD AND PARK AREA COMMITTEE

MINUTES of the meeting held at Loxley House on 20 NOVEMBER 2013 from 5.32 pm to 7.33 pm

- ✓ Councillor Liaqat Ali (Chair)
- Councillor Azad Choudhry (Vice-Chair)
- ✓ Councillor Mohammad Aslam
- Councillor Merlita Bryan
- Councillor Anne Peach
- ✓ Councillor Sarah Piper
- Councillor Dave Trimble

✓ indicates present at meeting

Others in attendance

- Dave Brennan - Castle Cavendish
- Alderman David Poole - City of Nottingham Neighbourhood Watch Council
- Tim Preston - Dunkirk and Lenton Forum
- Lesley Fyffe) Dunkirk and Old Lenton Community Association
- Sheila Porterfield)
- Paul Howard) Nottingham City Homes
- Lynn Standen)
- Inspector Rob Wilson) Nottinghamshire Police
- Inspector Annie Yates)
- Moby Farrands) Partnership Council
- Tony Marshall)
- Peter Beynon)
- Stewart Isham)
- Janet Jamson) Residents
- Nick Packham)
- Theresa Radford)
- Colleen Walker)
- Chris Newton - St Paul's Residents Association
- Rob Gabbitas - Neighbourhood Development Officer)
- Iffat Iqbal - Neighbourhood Development Officer) Communities
- John Marsh - Central Locality Manager)
- Linda Wright - Neighbourhood Development Officer)
- Dawn Alvey - Local Development Framework Manager)
- Navid Arif - Highway Design Engineer) Development
- Paul Williams - Senior Officer, Road Safety)
- Laura Wilson - Constitutional Services Officer - Resources

23 APOLOGIES FOR ABSENCE

Councillor Merlita Bryan	-	other Council business
Councillor Azad Choudhry	-	personal
Councillor Anne Peach	-	personal
Councillor Dave Trimble	-	personal
Fiona Corbett		
Mya Fletcher		
Peter Milligan		
Luke Willen		

24 DECLARATIONS OF INTERESTS

None.

25 MINUTES

The Committee agreed to amend minute 17 (f) to say that residents became desensitised to noise levels. The Committee then confirmed the minutes of the meeting held on 18 September 2013 as a correct record and they were signed by the Chair.

26 POLICING UPDATE

Inspector Annie Yates informed the Committee that, overall, crime in the Arboretum ward is down by 16.7% and highlighted the following issues:

- (a) the theft of number plates continues to be an issue in the area;
- (b) there has been a 60% reduction in burglary across the microbeats due to an increase in the number of patrols and targeted work with burglary victims and their neighbours;
- (c) the Police continue to execute warrants and act on intelligence in relation to drug offences;
- (d) the number of personal robberies have reduced as the number of officers working overnight on the exit routes from the City Centre has been increased;
- (e) there had been an increase in the number of thefts from people, but this was predominantly caused by Goose Fair;
- (f) the figures for violence in the ward are high and are constantly under review and subject to targeted work. Only a small fraction of the number of incidents is violence against/from a stranger;
- (g) anti-social behaviour is down slightly but, with the mild weather, the number of calls about noise has increased.

Inspector Rob Wilson informed the Committee that, overall, crime in the Dunkirk and Lenton ward is 23% lower than it was in April 2011 and highlighted the following issues:

- (h) there has been a slight reduction in the number of autocrimes in the area but, as the Dunkirk beat covers the industrial area, it adds to the figures because there are fewer residential areas and the figures are based on the number of residents in each area;
- (i) burglary has increased and is a constant challenge. Student households add to the

figures because if 3 locked rooms in one house are burgled it is counted as 3 incidents;

- (j) other types of burglary are being reduced and the main issue is people leaving bikes unsecured in their gardens which results in the bike being taken;
- (k) there has been a small increase in the number of incidents relating to damage and personal robbery, but the number of thefts has reduced.

Inspector Rob Wilson also highlighted the following issues in relation to the Radford and Park ward:

- (l) there was a reduction in crime in 2012 but a significant increase at the beginning of this year. The figures are coming back down and the increase related mainly to shop theft;
- (m) since this time last year there have been 65 fewer autocrime offences;
- (n) as is the case with the Dunkirk and Lenton ward, burglary has increased and continues to be a challenge. Student households increase the figures as explained above;
- (o) a number of shops on Alfreton Road had been broken into but arrests and charges have been made so the incidents are decreasing;
- (p) the number of incidents relating to damage are down significantly;
- (q) the number of thefts in the area is high, but arrests have been made and this appears to have stemmed the issue.

During discussion the Committee and others in attendance made the following comments:

- (r) the number of locked rooms entered by a burglar in a student household impacts on burglary rates across the wards so it would be helpful if the number of properties entered could also be reported to the Committee in the future;
- (s) if possible, it would be helpful to break down the theft figures to show food theft from shops as this could be increasing because of deprivation.

RESOLVED to note the information.

27 VOLUNTARY AND COMMUNITY SECTOR (VCS) GRANTS - CASTLE CAVENDISH UPDATE

Dave Brennan, Chief Executive, Castle Cavendish, presented the Committee with the following information:

- (a) in October 2012 Nottingham City Council opened up a bidding process for VCS bodies to come forward to become Lead Organisations for the VCS within the Council's Area Committee structure;
- (b) in January/February 2013 Castle Cavendish brought together a consortium of leading VCS bodies in Area 4 – The Lenton Centre, Hyson Green Youth Centre and Groundwork;
- (c) in May 2013 the Council appointed Castle Cavendish as the Lead Organisation in Area 4 to support the development of the VCS;

- (d) in July 2013 the Council awarded a Grant Agreement of £76,401, to which Castle Cavendish added £50,000, to support 3 priorities:
- (i) children and young people;
 - (ii) employment and training;
 - (iii) community association support.

In relation to the children and young people priority, Dave presented the Committee with the following information:

- (e) the basic principles are:
- (i) an emphasis on collaboration, not competition;
 - (ii) this year (2013/14) will be a period of transition, supporting existing grant recipients on a pro-rata basis;
 - (iii) developing agreements with a range of VCS providers, fostering and nurturing relationships and networks to improve effectiveness and performance;
 - (iv) supporting the local grassroots community activity through a small grants fund of less than £5,000;
 - (v) working to develop an Action Plan for 2014 and beyond, identifying local need and preferred activities and pathways for young people;
- (f) summer events and activities:

<u>Activity</u>	<u>Cost</u>
BOBS (Bridlington, Oldknow, Brown Street Residents Group)	£2,620
Hyson Green Youth Club	£4,500
East African Education Centre	£4,000
Muslim Women’s Organisation	£2,500
The New Art Exchange	£4,250
The Lenton Centre	£4,750
Nottingham Inter-Faith Council	£355
Nottinghamshire Clubs for Young People	£3,000
United Communities Network	£2,000
TOTAL	£27,975

- (i) the Muslim Women’s Organisation hosted a family friendly event on Radford Recreation Ground designed to celebrate the Queen’s coronation and Eid, with activities from British and Muslim cultures;
- (ii) the East African Education Centre arranged 4 themed based camps (learning, health, creativity and environment) for young people aged 6-18 and concluded with a fun day in Skegness;
- (iii) Hyson Green Youth Club provided summer holiday activity for young people aged 5-19, with 70% from BME communities;
- (iv) Nottinghamshire Clubs for Young People delivered 5 activity days including baking, sport, art, crafts, etc, with workshops for British Sign Language, basic first aid and healthy eating;
- (v) The New Art Exchange provided a diverse programme of ‘fringe’ events leading up to the Nottingham Carnival and Mela;
- (vi) Nottingham Inter-Faith Council, with Nottingham Forest Diversity Academy, delivered a football tournament for young people aged 8-14;
- (vii) The Lenton Centre delivered a holiday club and a small bursary fund to enable the most disadvantaged young people to learn to swim;
- (viii) United Communities Network provided entertainment to young people aged 5-13, including activities and outings;

- (g) the key delivery partners for diversionary support and targeted provision, and the

funding they have received are:

- (i) The Lenton Centre (£18,000);
- (ii) Hyson Green Youth Club (£15,000);
- (iii) Shiefton Youth Group (£15,644);
- (iv) Bobbersmill Community Centre (£9,000);
- (v) Notts County Football in the Community (£9,000);
- (vi) Take 1 Studios (£7,500)
- (vii) Nottinghamshire Clubs for Young People – Monty Hind (£1,125);

(h) in relation to diversionary support, the outcomes and expectations for 2013/14 are:

- (i) a range of provision for young people aged 8-17 that is:
 - structured, purposeful and fun;
 - delivered on a regular basis;
 - led by a suitably qualified worker;
 - designed and delivered in consultation with young people;
 - focussed towards children and young people deemed at risk;
- (ii) resulting in:
 - delivery of good quality provision where young people feel safe and understand what they can expect from the activity;
 - a contribution to the wider delivery of diversionary activities across the area;
 - improved community cohesion;
- (iii) achieving:
 - over 450 young people involved in diversionary activities;
 - over 31,000 activity hours provided at a cost of less than £4.41 per hour;

(i) in relation to targeted provision, the outcome and expectations for 2013/14 are:

- (i) a range of activities for young people aged 8-17:
 - whose street-based group behaviour is causing significant concerns within their communities; or
 - whose behaviour is identified as increasing the risk of negative outcomes;
- (ii) resulting in:
 - a reduction in the identified risk factors of the chosen groups;
 - a measurable local outcome based on the identified needs of the area
- (iii) achieving:
 - at least 70 young people involved in targeted activities;
 - over 2,500 activity hours provided at a cost of £11.54 an hour;

(j) the total funding for 9 months is £110,830 (£72,830 from Nottingham City Council and £38,000 from Castle Cavendish), with the following already spent during July to September:

	<u>Cost</u>	<u>%</u>
Direct cost of service provision by Delivery Partners	£43,665	82.5
Overhead costs of Delivery Partners	£3,990	7.5
Administration costs associated with Delivery Partners	£2,852	5.3
Management charge by Castle Cavendish	£2,500	4.7
TOTAL	£53,007	

£24,277 of this was from Nottingham City Council (45.8%) and £28,730 was from Castle Cavendish (54.2%);

(k) outputs and are targets are:

<u>Outputs</u>	<u>Achieved July – September</u>	<u>Target</u>
The number of young people engaged	961	1,327
The number of young people involved in diversionary activities	930	1,253
The number of young people supported through targeted provision	31	74
The average number of hours each person will be engaged through diversionary activities	20	37
The average number of hours each person will be engaged through targeted provision	47	31
The total hours of activity provided	20,379	33,990
The average cost of diversionary activities per hour per person	£1.71	£4.41
The average cost of targeted provision per hour per person	£6.08	£11.54

In relation to the employment and skills priority, Dave informed the Committee that:

- (l) there is no grant money from the Council, or any outputs or outcomes specified;
- (m) Castle Cavendish has made £12,000 available but a decision needs to be taken on how this is spent;

In relation to the community association support priority, Dave informed the Committee that:

- (n) only the Dunkirk and Old Lenton Community Association (DOLCA) is being supported by a contribution of £3,570 from the Council allocation but, so far, the only money spent is £1,190 on gas and electricity for the centre;
- (o) 394 people are using the centre each week, compared to a target of 450, and it is open for 84 hours per week. An average of 3 under-represented groups are supported by the centre per week;
- (p) Castle Cavendish is assisting them on developing a sustainable business plan.

The Committee confirmed that the Councillors will meet to look at the ward priorities and come up with suggestions for how to spend the money available for the employment and skills priority, but will consult with residents before a decision is made.

RESOLVED to note the information.

28 LAND AND PLANNING POLICIES DOCUMENT – PREFERRED OPTION CONSULTATION

Dawn Alvey, Local Development Framework Manager, introduced the Director of Planning and Transport's report and highlighted the following points:

- (a) the Land and Planning Policies (LAPP) documents is a statutory planning document that sits underneath the Greater Nottingham Aligned Core Strategies;
- (b) the LAPP will replace the existing 2005 Local Plan and contains 56 draft Development Management policies and 78 possible future development sites;
- (c) the Preferred Option has 4 sections relating to Core Strategy themes:

- (i) sustainable growth;
 - (ii) place for people;
 - (iii) our environment;
 - (iv) making it happen;
- (d) key policy areas are:
- (i) economy;
 - (ii) housing:
 - encouraging family housing;
 - presumption against the loss of family housing;
 - locations for purpose built student accommodation;
 - houses in multiple occupation
 - (iii) regeneration;
 - (iv) retail;
 - (v) design;
 - (vi) health and open space;
 - (vii) climate change;
 - (viii) transport;
- (e) there are 78 Preferred Option site allocations. Some sites from the previous stage have not been carried forward, but there are 7 new sites. Detailed site assessments have been carried out for each site and constraints have been identified and development principles set out;
- (f) the expected timetable is:
Summer 2014 - publication version
Spring 2015 - submission to Government
Summer 2015 - public examination
Winter 2015 - adoption of the plan

During discussion the Committee and others in attendance made the following comments:

- (g) no suitable alternative accommodation is being offered to students to attract them from the residential areas and sites, such as the Boots site, should be considered as a suitable site on which to provide an alternative 'townhouse' type accommodation for them;
- (h) if the Castle Quarter is developed it needs to be kept as a further education resource;
- (i) the Forest Mill site is not suitable for student accommodation, and there is already a large number of student buildings in the area. It would be more suitable for family housing with gardens, or accommodation for the elderly;
- (j) the plans for the former Dunkirk Fire Station are a missed opportunity to develop a secondary school for the area;
- (k) the Medi Park is not suitable for student accommodation and the successful industrial units located on the site should not be moved;
- (l) Prospect Place and Greenholme aren't included because they are less than 0.5 hectares, but Prospect Place could be considered alongside its adjacent parcel of land which is still industrialised. Not including them means they are not protected from future unwanted development.

RESOLVED to submit the Committee's comments (g-l above) as a formal response to

the consultation.**29 ENVIRONMENTAL SUBMISSIONS FROM NOTTINGHAM CITY HOMES (NCH)**

Paul Howard, Tenancy and Estate Manager, Nottingham City Homes, circulated the Chief Executive of Nottingham City Homes' report and informed the Committee that, although the Councillors for the Arboretum ward were not present, they had agreed to the proposals for their ward.

RESOLVED to approve the following schemes:**Arboretum ward:**

Site	Proposal	Assessment	Cost
Collison Sreet Car Park	Supply and fit 6ft palisade fencing to rear of car park to match existing	Security is currently compromised due to the lack of fencing to this section	£691.56
Camomile Gardens near 1-10	Take out a small area of grass and tarmac to create a bin store	Tenants currently have nowhere to store bins	£2,920.48
340-378 Alfreton Road	Supply and fit 4 new 6ft metal gates with keys	Residents have problems with trespassers	£2,868.48
Total budget to carry forward			£26,442.59

Dunkirk and Lenton ward:

Site	Proposal	Assessment	Cost
Penn Avenue (Wishford Avenue border)	Move the existing Heras fencing to run inline with the timber fencing and block up access for 7 Wishford Avenue	Additional security and improved appearance	£1,755.06
Total budget to carry forward			£24,797.04

30 WARD PERFORMANCE – QUARTER 2

John Marsh, Central Locality Manager, introduced the Director for Neighbourhood Services' report and highlighted the following points:

- (a) all 3 wards are on target for cleanliness, although graffiti is currently slightly above the figures for previous years, and flytipping is a major issue in Arboretum and Dunkirk and Lenton;
- (b) teams are currently working on leaf fall across the City and are targeting problem areas;
- (c) there is a replacement sweeper programme in place and the fleet vehicles are being rationalised.

During discussion the Committee and others in attendance made the following comments:

- (d) there are 4 gully cleaners across the City – 3 carrying out programmed works and 1 that is responsive to issues. Every gully in the City is cleaned/cleared once a year;

- (e) parked cars cause problems for street cleaning. There are ‘A’ boards that can be put out in advance asking people not to park there but there are no enforcement powers;
- (f) leaf fall is an issue in November but garden waste collections are stopped at the end of October.

RESOLVED to note the ward performance for Quarter 2 2013/14.

31 AREA CAPITAL FUND 2013-15 PROGRAMME

Rob Gabbitas, Neighbourhood Development Officer, introduced the report of the Director of Neighbourhood Services, and informed the Committee of an amendment to cost of the Arboretum Public Realm Schemes – Belper Road fencing to £3,655 instead of £3,190.

RESOLVED to

- (1) note that the following money is available:

Arboretum	£154,734
Dunkirk and Lenton	£99,443
Radford and Park	£155,293

- (2) approve the following new schemes, prioritised by Ward Councillors since the last meeting:

Arboretum Local Transport Plan Schemes:

Location	Type	Estimate	Details
Belper Road	Footpath	£2,208	Full resurface of footpath adjacent to LIGA – one side only
Patterson Street	Footpath	£2,414	Full resurface of footpath opposite ‘Amelia’ – one side only
Claypole Road	Carriageway	£19,212	Full resurface of carriageway from Radford Road to Maple Street

Arboretum Public Realm Schemes:

Location	Type	Estimate	Details
Belper Road	Fencing	£3,655	Remove wall and install rails as part of works to regenerate Belper Road car parking area
Priority cleansing areas	Equipment	£708	Replacement cleansing equipment for use on Gregory Boulevard

Dunkirk and Lenton Local Transport Plan Schemes:

Location	Type	Estimate	Details
Sainsbury’s, Derby Road and Lenton Boulevard	Cycle stands	£2,000	Two cycle stands outside Sainsbury outlets as part of Citywide cycling improvement strategy

Dunkirk and Lenton Public Realm Schemes:

Location	Type	Estimate	Details
Penn Avenue	Play equipment	£3,741	Combination swing with metal post including surfacing and ground preparation works
Priority cleansing areas	Equipment	£708	To improve backlines on small streets and paths on leaf fall season. Also for use on Lenton Boulevard

Radford and Park Local Transport Plan schemes:

Location	Type	Estimate	Details
Forster Street	Traffic calming	£58,000	Proposed traffic calming scheme along Forster Street to improve safety around Radford Primary School
Redoubt Street	Resurfacing	£29,121	Works to include treatment to granite setts. Forms part of wider improvements to Forster Street traffic calming
Faraday Road	Feasibility	£2,000	To address traffic management and safety concerns including Faraday Road/Derby Road junction

Radford and Park Public Realm Schemes:

Location	Type	Estimate	Details
Priority cleansing areas	Equipment	£708	Replacement cleansing equipment for use on Radford Road and Alfretton Road
Fleet Close	Fencing	£250	Request from residents to complete the fencing by fencing up the existing gap

32 AREA COMMITTEE TERMS OF REFERENCE - AMENDMENT

John Marsh, Locality Manager, introduced the Corporate Director for Communities' report regarding changes to the Area Committee terms of reference to incorporate Area Panel functions.

RESOLVED to note the Committee's revised terms of reference, as set out in Appendix 1 of the report.

**ARBORETUM, DUNKIRK AND LENTON, RADFORD ANDPARK AREA COMMITTEE –
19 FEBRUARY 2014**

Title of paper:	WARD PERFORMANCE REPORTS: QUARTER 3	
Director(s)/ Corporate Director(s):	Andy Vaughan Director of Neighbourhood Services	Wards affected: Arboretum Dunkirk and Lenton Radford and Park
Report author(s) and contact details:	John Marsh, Locality Manager john.marsh@nottinghamcity.gov.uk 0115 8838467 Rob Gabbitas, Neighbourhood Development Officer rob.gabbitas@nottinghamcity.gov.uk Tel: 0115 8838472 Linda Wright, Neighbourhood Development Officer linda.wright@nottinghamcity.gov.uk Tel: 0115 8838473 Iffat Iqbal, Neighbourhood Development Officer iffat.iqbal@nottinghamcity.gov.uk Tel: 07985221347	
Other colleagues who have provided input:	Dave Halstead, Head of City Services dave.halstead@nottinghamcity.gov.uk Linda Robertson, Analyst, Crime and Drugs Partnership linda.robertson@nottinghamcity.gov.uk	
Date of consultation with Portfolio Holder(s) (if relevant)	N/A	
Relevant Council Plan Strategic Priority:		
Cutting unemployment by a quarter		<input checked="" type="checkbox"/>
Cut crime and anti-social behaviour		<input checked="" type="checkbox"/>
Ensure more school leavers get a job, training or further education than any other City		<input checked="" type="checkbox"/>
Your neighbourhood as clean as the City Centre		<input checked="" type="checkbox"/>
Help keep your energy bills down		<input type="checkbox"/>
Good access to public transport		<input type="checkbox"/>
Nottingham has a good mix of housing		<input type="checkbox"/>
Nottingham is a good place to do business, invest and create jobs		<input type="checkbox"/>
Nottingham offers a wide range of leisure activities, parks and sporting events		<input type="checkbox"/>
Support early intervention activities		<input checked="" type="checkbox"/>
Deliver effective, value for money services to our citizens		<input checked="" type="checkbox"/>
Summary of issues (including benefits to citizens/service users):		
<p>The ward performance reports provide updates on key issues and themes which link back to local priorities and strategic themes in the Nottingham Plan 2020. The reports provide summary updates on the following key themes:</p> <ul style="list-style-type: none"> • Ward Priorities • Community Engagement • Finance • Safer theme – Crime and Anti-Social behaviour (ASB) • Neighbourhood theme – Environmental issues and Housing • Working theme – Unemployment rates • Housing • Community Protection 		

- Fire
- Health Theme – local health priorities

The Central Locality (through the Central Locality Board) has targets to reduce dwelling burglary, shop theft and violence. As at December 2013 the targets were being met for dwelling burglary, but not for shop theft or violent crime.

Some of the data in the ward reports attached now only refers to a month not a quarter. It covers the month of December 2013. It is important to note that as the figures are only for a month and not averaged out over three months, some of the increases/decreases seem quite high/low compared to those reported in previous meetings.

The following is a brief summary by the respective Ward Neighbourhood Development Officers (NDO):

Ward: Arboretum
NDO: Linda Wright

Crime: All crime has increased 14.6% year to date for December 2013 (114 actual crimes up). The largest volume of crime for December relates to shops, theft from the person and theft in dwellings. Arboretum is showing the greatest increase in all crime compared to the other wards. The ward has been assigned a micro beat which includes all the streets within the boundary of Bentinck Road, Birkin Avenue, Gregory Boulevard and Mount Street back to Bentinck Road. The micro beat aims to increase foot patrols in the targeted area, in order to prevent crime. Unfortunately there was a murder in the ward during this period. The perpetrator was quickly apprehended by the police and is awaiting trial.

ASB: All ASB was up 6.3%, year to date for December 2013(a change of 45 up). Year to date the micro beat area accounts for 21% of all ASB in the ward, however this percentage has decreased to 16% during December.

Cleanliness Index: The index score set as a target city wide is 80%. In comparison the average for the Ward was 88, this is showing a slight decrease in the statistics year to date. However, on the ground residents have stated there is an improvement in the frequency of the cleaning and the purchase of a new Billy Goat for the ward should increase the effort to get below the index score.

Graffiti Reports: 40 incidents reported which is an increase of 23 year to month.

Fly Tipping: 39 incidents which is a decrease of 22 year to month, work is being done in the Neighbourhood Action Team (NAT) to identify ways to design out this type of offence i.e. remove walls to improve visibility.

Unemployment Rate: The ward is ranked 8 out of 20 wards for unemployment in the city for this month. There was a 5.5% decrease of people on job seekers allowance year to date.

Community Protection: Data not produced in time for report.

Housing: The number of empty properties waiting decommission in the ward is 53 based on the 2013/14 figures which is up 1 from the previous year.

Fire: Year to date the Arboretum ward has had no deliberate fires in the ward. This is a 100% improvement year to date. There were 2 fires in November.

Key Successes: The Arboretum NAT has continued working hard over this quarter. A successful

Arboretum week of Action was delivered, the result of which has been a 100% fall in complaints from residents with in the targeted areas, noticeably, with regard to bins on street, for example, Brush Field Street had 48 residents served with section 46's enforcement action to stop them leaving their bins on street. The general advice day at the Mary Potter Centre, hosted a wide variety of providers who all came to increase awareness of their particular service and important key messages. Stalls on the day provided information on healthy eating, blood pressure nurse, domestic violence, credit union, welfare rights, Sure Start, energy efficiency home packs, the Employment and Training Team, the fire service and police were all there giving advice how to make homes safer places to be and more secure. There was something there for all sections of the community as the week ended with a similar event as part of the Black History season.

St Paul's Avenue and Terraces were experiencing extensive fly tipping for a short period of time. The Community Protection Officer's (CPO) were tasked with reducing the incidents and by actively issuing penalty notices, combined with joint activity with City Services, delivered a decrease of fly tipping in the area which was co-ordinated at the NAT.

Area 4 wards joined together for their Christmas tree light switch on at Canning Circus. There were over 200 individuals in attendance and local schools like Berridge Junior and Bentinck Primary sang festive songs at the event.

Issues: One of the outstanding issues for the ward relates to the displacement of drinkers from the city as many of them congregate on the Forest. There is an action plan that is being developed by the police and is being taken to the Locality Board from the NAT in order to draw down extra resources' to resolve this problem before it picks up again in the summer.

Cars for sale are becoming a problem as they make it difficult to clean the streets appropriately as they tend to be parked close to each other and are rarely moved so collect litter around and under them.

Events: The Forest Recreation Ground saw another successful Goose Fair staged in the area which is a national event. The Arboretum also put on a successful Christmas tree light switch on event which attracted over 500 people to attend from all over the city, as did Trent University.

NATs: All the partners are working together on the agreed ward priorities for 2013-2014 plans. The NAT team is in the process of developing key actions to be delivered 2014-15. All partners aim to deliver actions that will enhance residents and visitors experience of being in the ward.

Ward: Dunkirk and Lenton

NDO: Iffat Iqbal

Crime:

- Dunkirk and Lenton is one of the few wards showing reduction in all crimes and ASB
- Dwelling burglary is showing an overall reduction compared to the same month last year.
- Theft is the main volume offence on the ward which includes theft of bicycles mainly at the QMC and mobile phone theft.
- Violent crime has been reported from the QMC and a local Children's home in the month of December 2013.
- Auto-crime has increased compared to the same time last year, and incidents are mainly taking place on Lenton Boulevard, with items such as Sat Navs and laptops being targeted.

ASB: ASB levels in the ward are 1.47 which is below the average.

Cleanliness index: Cleanliness Index Score is 88 compared to a neighbourhood target of 86. Waste management, including recycling, bins on the pavement, over-flowing and contaminated

bins, bin dippers, and waste in gardens is still a major concern for residents.

Graffiti reports: Graffiti has seen a slight increase this month with 12 incidents reported. Most of these incidents are happening on canal bridges, flyover's and railway bridges.

Fly Tipping: 9 incidents have been reported compared to 7 reported by the same time last year. This is an on-going issue for the ward especially around Montpellier Road, Lenton Boulevard and Beeston Road.

Unemployment rate: The ward is ranked 19th out of 20 wards for unemployment in the city for this month, however, figures may be skewed by the student population which is 68% of the total ward population.

Housing: The number of empty properties to be decommissioned has increased from 39 in 2011/12 to 162 in 2013. For 2013/14 this figure has increased further to 274. In the previous year the average time taken to re-let a property was 18 days. This has now been reduced to 15 days.

Community Protection: In December one caution was given for environment crime. No figures are available for Fixed Penalty Notices

Fire: There were 4 deliberate (primary and secondary) fires in December. Year to date fires in the ward have increased by 2.

Key successes: A Day Of Action took place on 27 November covering Cecil Road?, Chippendale Road?, Alderney Road? and Grove Road to tackle fly-tipping, bins on pavement, contaminated bins, litter and bulky waste in back gardens and alleyways. On the day Neighbourhood Services, Nottingham Community Housing Association, Nottingham City Homes, Community Protection and University of Nottingham came together to dedicate time to improve the streets by pursuing a number of improvements including numbering household waste bins, replacing bins, a full-scale litter and rubbish clearance, door knocking and speaking to residents and students, reinforcing messages regarding waste management and taking responsibility for the neighbourhood.

One of the main issues identified was that many occupants on Cecil Road? and Chippendale Road? did not have keys to access the alleyway gates to take bins back to their properties. Therefore Councillors funded the replacement of locks on the gates and issued all residents with new sets of keys. Enforcement on these streets will begin in the second week of February 2014.

A very exciting community heritage project is being set up by the Dunkirk and Lenton Partnership Forum and Trent and Peak Archeology to raise the public profile of Lenton Priory and improve its future management, as well as boost community cohesion in the Lenton ward through a sense of shared heritage. The Councillors have funded a Martinmas Fair which will take place in November 2014 to celebrate the medieval fair in which present-day traders of local and international produce will be invited to sell their wares alongside medieval re-enactment and educational installations. Through an emphasis on social interaction between different identity groups in the medieval period, it is hoped that greater connectivity and understanding will be achieved between present day communities in Lenton.

The 'Green Corridor' project which has been set up to improve cycling and pedestrian connectivity from Castle Boulevard, Willoughby Street, high-rise flats site, Sandfeild site right through to the John Carroll Leisure Centre has received initial funding of £22,000 to produce designs to look at options and cost estimates which then can be considered for funding and implementation.

Area 4 Christmas tree event was a great success with five local primary schools including Edna G

Olds and Dunkirk Primary, residents and partner organisations attending.

Demolition work continues on Lenton high-rise flats. Three sites have been emptied and plans have been developed to build a mixture of apartments and bungalows for the over 50's as well as family houses.

Issues: Night-time noise predominately caused by late night student parties especially on Lenton Drives and Derby Road continue to be a concern for local residents. The new noise reporting procedure via the non-emergency number 101 is still unfamiliar with residents. The NAT teams are working together to promote and raise awareness of the 101 number by producing publicity and a campaign which was launched in December.

Penn Avenue residents have raised several issues relating to caretakers, cleansing and improving the front garden on site. Two meetings have taken place and partners have been tasked with specific actions.

Lenton Boulevard, a popular thoroughfare for traffic, presents a negative impression of the ward with empty shops, bins on pavement and untidy front gardens. A Boulevard Improvement Plan has been developed by partners to address these issues.

Burglaries and auto crime have increased in the ward. Neighbourhood police are working with partners and delivering 'Operation Graduate' - both targeted and preventative work to address this.

There continue to be issues with broken glass from bottles left overnight, fly-tipping, poorly maintained gardens, bins on streets and contamination which is regularly tackled by City Service teams and Community Protection. Posters have been designed by local children highlighting the dangers of broken glass which have been put up in hot-spot areas.

Cycling on pavements is an on-going issue for the ward and several operations have been set up by Community Protection on Beeston Road, Hillside shops and near to the QMC.

Events: A Christmas light switch on was arranged at Canning Circus for Area 4 residents which was very well attended. The lights were switched on by the Lord Mayor and local Primary schools took part.

A second budget consultation was held giving citizens the opportunity to give us their views.

NAT: The NAT continues to be represented by various key service providers working across the Ward and are currently delivering actions based on the revised Ward priorities.

Ward: Radford and Park

NDO: Rob Gabbitas

Crime:

- Across all crime categories, the ward has seen a reduction of 32 crimes over the same period last year (down from 159 to 132).
- The December figures for burglary show a 76% reduction, from 33 incidents in 2012 down to 8 reported incidents in December 2013. Similarly for the same period drugs crimes fell from 11 to 4 (64%).
- Incidents of anti-social behaviour have increased by 77 cases – up from 605 to 682.
- Theft is the main crime in this ward and accounted for 35% of all crime in December 2013. Shop theft is generally the highest category and these offences were spread across Lidl, Aldi, B and M and Maplin. The percentage of theft involving the targeting of mobile phones rose in December.

- The incidents in the category Theft (Other) were quite widespread and involved theft of phones, purses and money from purses.
- 44% of violence offences were domestic related.
- Radford and Park ward ranks high in respect of auto crime (second highest ward) and dwelling burglary (third highest ward).

ASB: ASB per 1000 population at December 2013 was 2.14 which is relatively low across all wards and significantly lower than the figures for the previous year

Cleanliness Index: The index score for Radford and Park for November 2013 is 90 which means that the neighbourhood target is being met.

Graffiti Reports: There have been 23 incidents of graffiti which is an increase of 5 over last year at the same time.

Fly Tipping: There have been 87 incidents of flytipping during November in Radford and Park which is an increase of 12. There are regular actions around flytipping hotspots and additional warning notices have been on display around the worst areas leading to some improvements so far this year.

Unemployment Rate: The ward is ranked 16th out of 20 wards for unemployment in the city for this month, however, figures may be skewed by the student population which is 49% of the total ward population.

Community Protection: In December 2013 the following orders were issued - 5 Statutory Notices for the Environment and 1 outright Possession Order (Eviction) for ASB.

Housing: The number of properties awaiting decommission is down to 54 from 112.

Work has now started to develop the new houses adjacent to Argyle Court, off Clifford Street and Nottingham City Homes and the City Council will work together to identify additional environmental schemes which could be introduced to improve the wider public realm in this area, particularly the open space between Clifford Street and the rear of Alfreton Road shops, close to the housing development.

Lettable voids are up from 7 to 19 (whole year figure). Voids re-let time for this ward is 16.74 (against a citywide target of 25).

There has been some success in terms of completing repair work within the target performance figure of 96%. This ward achieved 98.01 for December 2013.

Fire: There was 1 deliberate fire in November 2013 (same figure for last year).

Key successes: There is continuing interest in the wider public realm space around the John Carroll Leisure Centre site. Groundwork Greater Nottingham have finalised contract details for the provision of new play equipment on the park immediately opposite the Centre (adjacent to Garfield Road). This project will commence in February 2014. There are opportunities to develop close links with the Sikh Community following improvements to their premises on Norton Street and proposals are in place to support a celebratory Sikh new year event on Saturday 12 April – linked to a health promotion.

The Leisure Centre continue to offer a wide range of activities for all ages and will be looking at 'connectivity' to the new housing developments in this area – notably the new Nottingham City Homes properties replacing highrise units at High Cross and Clifford Court. The Radford Mills site is

now clear and awaiting redevelopment for social housing which will again boost local housing provision.

A 'Green Corridor' project has been set up by the Dunkirk and Lenton Partnership in conjunction with the City Council, the aim of which is to develop safe cycling and pedestrian routes, connecting Castle Boulevard, Willoughby Street, through to the Sandfield site up to the John Carroll Centre. An initial £22,000 has been secured to produce option designs and cost estimates to support further funding bids and possible scheme implementation.

The Christmas lights switch on at Canning Circus proved to be popular with support from Area 4 primary schools, local policing teams, University of Nottingham students, residents and Derby Road retailers. This is one of a number of potential initiatives helping to support this entrance to the city and increase footfall around Derby Road and Canning Circus. Some important links with the business hub are being created and will be developed during this next year. Early discussions are in place about the greater use of the Canning space – for example craft events and festivals, all of which can complement the reopening of key businesses and establishment of new ones in this area.

There has been further awareness raising within the area about the increased use of foodbanks. Radford and Leen Residents Group received a presentation recently on the work of Hope Nottingham and were made aware that residents in need could get involved or receive vouchers for food packages through contacting the Zion Millennium Church, Church Lane, Radford.
hope@nottingham-org.uk.

Issues: There are a number of sites within the ward which continue to create operational demands in terms of overall cleanliness. These are known fly tipping sites, some with little natural surveillance. There have been initiatives recently around Garfield Street, Brook Court complex and New Road. Notices have been displayed discouraging illegal dumping and enforcement activity heightened to address the worst cases.

There are also key redevelopment sites such as Radford Mills and Forest Mills where residents need to be involved with the changes likely to affect their neighbourhoods. These are important opportunities to strengthen existing Tenants and Residents Groups and some work has been undertaken recently to promote and sustain groups including Radford and Leen TRA, BRAMTRA, Radford West Residents Group and a new forum to involve residents in the Lenton Triangle area.

Lenton Road Right of Way (also affects Dunkirk and Lenton Ward) – Having considered the evidence put forward at the Public Inquiry held in July 2013, the decision of the Secretary of State is that Lenton Road is an ancient public right of way on foot. The route has now been added to the Council's Definitive Map which is the legal register of all known public rights of way in Nottingham.

The NAT group continues to meet monthly bringing together a range of partners to develop actions for the whole ward and currently addressing the neighbourhood policing priority of street drinking.

Recommendation(s):

1	To note the key information from the Ward Performance Reports for December 2013.
----------	--

1. REASONS FOR RECOMMENDATIONS

- 1.1 Ward performance reports provide a descriptive and statistical picture of what is happening at a ward level and invite community representatives to comment, debate, challenge and identify how they can add value to improve their neighbourhoods.

1.2 They also monitor progress in the wards and act as a catalyst for debate about the key performance issues impacting upon the ward on a quarterly basis.

2. BACKGROUND (INCLUDING OUTCOMES OF CONSULTATION)

2.1 Neighbourhood working has been important for a number of years in Nottingham as a means of engaging better with citizens and to drive forward service improvement.

2.2 The Nottingham Plan has a goal that ‘public service delivery will be better integrated and appropriately devolved, ensuring more accessible and responsive services for all and giving residents more control over what happens in their neighbourhoods’; ward performance report will help to support this.

2.3 The ward performance report captures work at a local level to support the Nottingham Plan; it is a short summary of key updates on priorities and issues in the ward. More detailed implementation plans sit behind the report such as the Ward Action Plan, Neighbourhood Action Team’s (NAT) action log, Crime and Drug Partnership (CDP) plans and other partners’ implementation plans.

2.4 The reports are co-ordinated by Neighbourhood Development Officers, with data analysis undertaken by the CDP.

3. OTHER OPTIONS CONSIDERED IN MAKING RECOMMENDATIONS

3.1 None

4. FINANCIAL IMPLICATIONS (INCLUDING VALUE FOR MONEY/VAT)

4.1 None

5. RISK MANAGEMENT ISSUES (INCLUDING LEGAL IMPLICATIONS AND CRIME AND DISORDER ACT IMPLICATIONS)

5.1 None

6. EQUALITY IMPACT ASSESSMENT

Has the equality impact been assessed?

Not needed (report does not contain proposals or financial decisions)

No

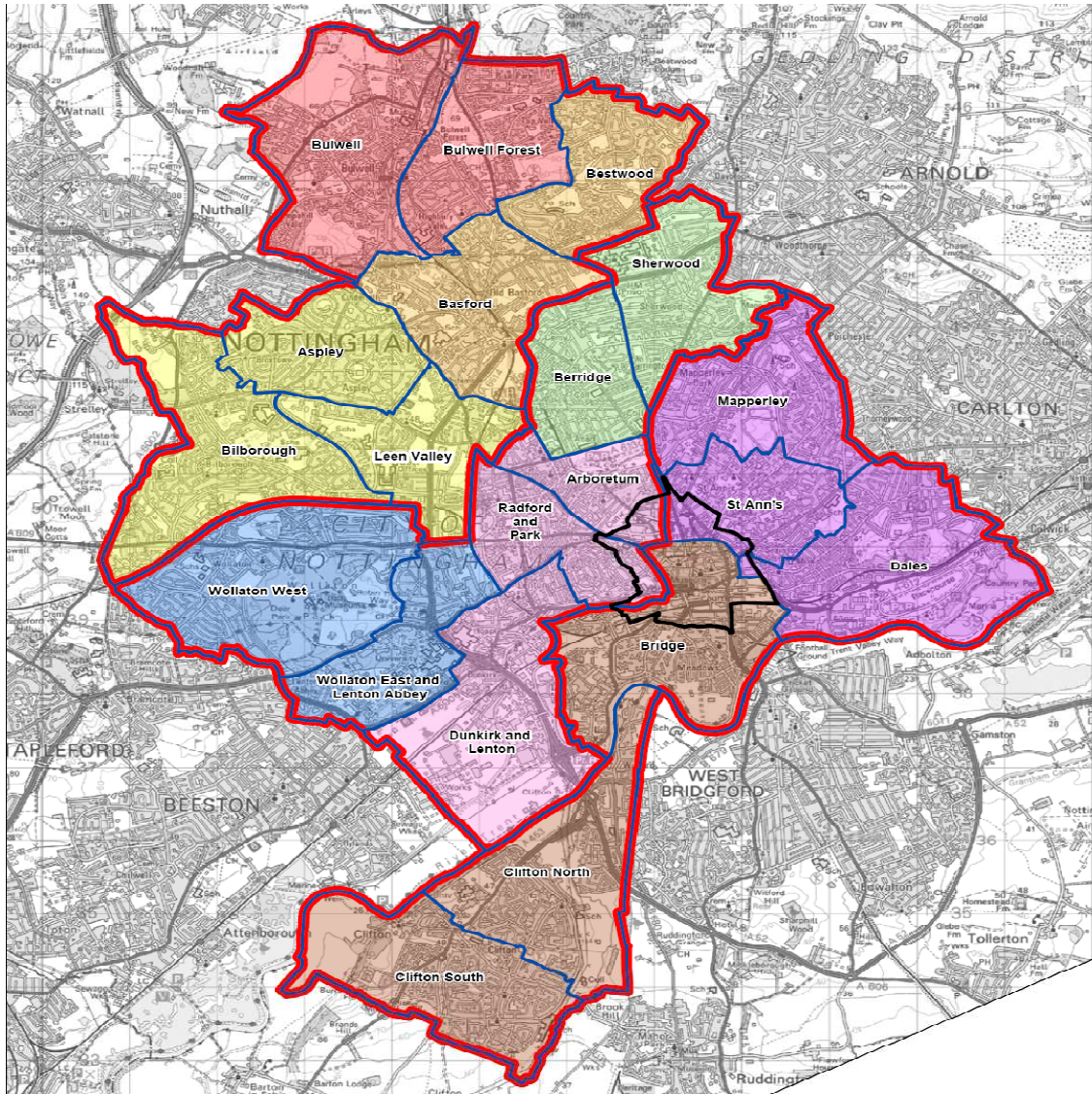
Yes – Equality Impact Assessment attached

7. LIST OF BACKGROUND PAPERS OTHER THAN PUBLISHED WORKS OR THOSE DISCLOSING CONFIDENTIAL OR EXEMPT INFORMATION

7.1 Neighbourhood Working Framework 2012 CLT report.

8. PUBLISHED DOCUMENTS REFERRED TO IN COMPILING THIS REPORT

8.1 None.



Arboretum

Area Committee Report

Unofficial December 2013
Data

Ward Priorities

Theme	Priorities	Key Actions	Outcome – Oct – Dec 2013	Lead
Safer	Reduce Anti Social Behaviour relating to Alcohol/drug use (on street.)	Increase the number of confiscations' Reduce drug/alcohol use on all of the local Park.	There have been 46 alcohol confiscations between October and December 2013 which is down from 126 on the previous quarter which is probably due to the hot summer period and down from 52 on the October-December 2012 period.	Police/ Community Protection
Neighbourhoods	Reduce Bins on street. Reduce Fly Tips & Dog Fowling.	Increase enforcement action. Increasing education of local residents.	There have been approximately 130 section 46 notices issued for bins on streets. City Services are still working to remove missed bins. City Services are working closely with enforcement to reduce incidents of dog fouling and educating dog owners to clean up after their dog. During January there will be on targeted streets operation starting with Newstead Grove.	Community Protection City Services
Families	Provide play & youth activities increase outreach work.	We plan to do an additional street session each week, and strive to support local residents with local initiatives within the ward	Hyson Green Youth Club – Football/ Basketball – 1,095 Males & 180 Females (13-18yrs). Deaf Club- Males 14 & Females 48 (13-25 yrs) Street Sessions Males 125 & Females 62 (All Ward) Targeted Projects Males 31 & Females 33.	Central Family & Community Team

Health	Raise Awareness of Better Health	<p>Increase opportunities and affordable Physical activities</p> <p>4 x Weaning Education Groups</p> <p>1eatwell for life session</p>	<p>Try a new sport for free' initiative. Data not yet available Change Maker 'happy hearts' walk. 10 people took part.</p> <p>2 week session at the Hyson Children's Centre. 6 sessions at the Hyson Green Children's centre.</p>	<p>Decade Of Better Health Sports & Leisure</p> <p>Nottingham Community Nutrition and Dietetic Service.</p>
Working	Increase in training and employment opportunities.	Increase Funding Training and Education Service to support residents who need help in accessing job search, training courses, CV writing	<p>2 years of funding secured for unemployed 18 – 24 years olds to access, training and jobs in the area through the Youth Contract. Delivery model and partners being developed.</p> <p>In discussions with Castle Cavendish about employment priorities for their funding 2014/15.</p>	Kevin Bartlett Economic Development

Community Engagement

Ward Walks

Area/Estate	Date/Time	Meeting Point
Arboretum Patch 1 Arboretum Patch 2	.08/10/13 at 10.00pm – 12. 15/10/ 13 at 10.00pm - 12	Mary Potter Centre
Hyson Green Patch 1	14/11/13 at 1.00am – 12	Mary Potter Centre
Hyson Green 2 WOA Ward Walk HG 1	11/12/13 at 1.00pm -3. 29/12/13 at 4.00pm - 3	Mary Potter centre St Paul's Avenue

Community Meetings

Group	Date	Venue
LAG NCH Area 4 Panel	09/10/13 at 6.30- 8.00 pm 13/11/13 at 3.00 – 5.30pm	Mary Potter centre
NBFE	11/10/13, 13/11/13 – 5.30 -7.30pm 15/10/13 at 01 – 2.30pm	Hyson Green Community Centre New Brook House
St Paul's & Pleasant Row Residents meeting	29/10/13 at 5.30- 8pm 14/01/13 at 6.00 – 8pm	Mary Potter Centre
Community partnership Forum	23/10/13 at 11-12.30pm, 08/10/13, 11/09/13, 18/11/13 at 6-8pm 20/11/12, 18/12/13 at 6-8pm	Newton Building Mary Potter Centre Marcus Garvey Centre

Community Engagement

Events Delivered

Event	Lead Partners	Date/Time	Venue
Arboretum Week Of Action General awareness Event Black History Event Dog Micro Chipping	Neighbourhood Development Team & Partners	28/10/13 – 01/11/13 30/10/13, 01/11/13 at 10am -3pm 31/10/13, 10-4 pm	Brushfield Street Area & Events at Mary Potter Centre Forest Rec
Christmas Tree Light Switch On.	Neighbourhood Management Parks Depart	21/11/13 15/12/13	Canning Arboretum Rec
NCC Funding update & Regional partnership working	Community partnership Forum	20/11/13 at 6-8pm,	Marcus Garvey Centre
Budget Consultation Event	Neighbourhood Services	29/10/13 at 5.30pm – 8.00.	Mary Potter Centre

Future Events and Activities Planned

Event	Lead Partners	Date/Time	Venue
LAG Meeting Community Partnership Mt	Police Community Partnership Forum	08/01/13 at 6.00 – 7.30pm 27/01/13 at 6.00 – 8.00pm	Mary Potter Centre Marcus Garvey Centre
Budget Consultation	Neighbourhood Development Team	03/02/14 at 6.30 – 8.00pm	Mary Potter Centre
Vulnerable young peoples event	NCVS	22/01/14	NCVS

Finance

Ward Councillor Budgets

Total Amount allocated this period £2,000

Budget Remaining Unallocated £8,666(inc of 2013-14 allocation)

Area Capital Fund

Total Amount allocated this period £2,260

Budget Remaining Unallocated £128,659 (inc of 2013-15 allocation)

Others – Section 106, NCH Environmentals, Other Funding

£0(this period)

Ward Summary

Crime data is shown below for both the current month compared to last year and the year to date.

Ward	Type	Dec-12	Dec-13	Volume +/-	% Change	YTD 12-13	YTD 13-14	Volume +/-	% Change
ARBORETUM	Autocrime	7	7	0	0%	59	63	4	7%
	Burglary	28	9	-19	-68%	138	108	-30	-22%
	Burglary Other	3	1	-2	-67%	30	34	4	13%
	Damage	10	16	6	60%	130	140	10	8%
	Drugs	9	8	-1	-11%	84	104	20	24%
	Fraud	1	1	0	0%	12	7	-5	-42%
	Other	2	5	3	150%	27	37	10	37%
	Personal Robbery	5	2	-3	-60%	45	62	17	38%
	Robbery Business	1		-1	-100%	5	1	-4	-80%
	Sexual	2	5	3	150%	32	41	9	28%
	Theft	17	12	-5	-29%	174	210	36	21%
	Threats	3	5	2	67%	26	24	-2	-8%
	Violence	28	27	-1	-4%	197	278	81	41%
ARBORETUM Total	All Crime	116	98	-18	-16%	959	1109	150	16%
	ASB	53	76	23	43%	712	757	45	6%

The summary below shows only year to date figures, and in the case of public realm and fire data, will generally be a month in arrears.

Type	YTD 12-13	YTD 13-14	Volume +/-	% Change
Domestic Violence Crime	74	92	18	24%
Night Time Economy Violence	4	3	-1	-25%
Hate Crime	10	17	7	70%
Deliberate Fires	13	18	5	38%
Cleanliness (Average Score)	85	87	2	2%
Graffiti	224	266	42	19%
Fly-Tipping	356	556	200	56%

Priorities & Targets

The Central Locality has targets to reduce Dwelling Burglary, Shop Theft and Violence.

Arboretum, as a High Impact Ward, has targets to reduce Dwelling Burglary, Theft and Violence. Arboretum is currently meeting targets in all but the Violence Category.

Performance against Targets is set out below for both the Locality as a whole and Arboretum

Locality Target Summary																
Locality	Crime Type	Apr-13	May-13	Jun-13	Jul-13	Aug-13	Sep-13	Oct-13	Nov-13	Dec-13	Jan-14	Feb-14	Mar-14	YTD	Proposed year end Position	+/- Target Position
Central	Dwelling Burglary	96	77	71	65	56	59	55	79	69	75	75	75	627	890	-38
	Shop Theft	88	71	96	55	54	27	54	52	57	40	40	40	554	644	30
	Violence	96	114	115	130	130	110	145	109	113	84	84	84	1062	1173	141

High Impact Ward Target Summary																	
Locality	High Impact Ward	Crime Type	Apr-13	May-13	Jun-13	Jul-13	Aug-13	Sep-13	Oct-13	Nov-13	Dec-13	Jan-14	Feb-14	Mar-14	YTD	Proposed year end Position	+/- Target Position
Central	Arboretum	Dwelling Burglary	16	19	14	6	12	12	8	12	9	15	15	15	108	172	-19
		Theft	24	23	23	22	21	11	19	19	12	16	16	16	174	225	-3
		Violence	21	29	24	29	33	29	52	34	27	20	20	20	278	276	62

Ward Performance

The table below shows how Arboretum is performing year to date for All Crime and ASB in comparison to the other wards on the Division. High Impact wards are highlighted in blue.

Arboretum is showing the greatest increase in All Crime and ASB compared to the other High Impact Wards and the second highest increase in All Crime across all wards.

Dec 2013		All Crime				ASB			
Locality	Ward	YTD 12/13	YTD 13/14	Change	% Change	YTD 12/13	YTD13/14	Change	% Change
Central	ARBORETUM	968	1109	141	14.6%	712	757	45	6.3%
	BERRIDGE	1149	1171	22	1.9%	821	737	-84	-10.2%
	DUNKIRK & LENTON	807	744	-63	-7.8%	348	273	-75	-21.6%
	RADFORD & PARK	1119	1150	31	2.8%	605	682	77	12.7%
	SHERWOOD	780	985	205	26.3%	351	388	37	10.5%
	WOLLATON EAST & LENTON ABBEY	330	354	24	7.3%	110	117	7	6.4%
	WOLLATON WEST	377	430	53	14.1%	140	138	-2	-1.4%
Central Total		5530	5943	413	7.5%	3087	3092	5	0.2%
City	CITY CENTRE	6138	5638	-500	-8.1%	2160	1872	-288	-13.3%
North	ASPLEY	1326	1194	-132	-10.0%	755	704	-51	-6.8%
	BASFORD	903	940	37	4.1%	542	511	-31	-5.7%
	BESTWOOD	734	808	74	10.1%	491	643	152	31.0%
	BILBOROUGH	968	956	-12	-1.2%	615	611	-4	-0.7%
	BULWELL	1438	1428	-10	-0.7%	919	822	-97	-10.6%
	BULWELL FOREST	689	735	46	6.7%	345	403	58	16.8%
	LEEN VALLEY	547	583	36	6.6%	304	309	5	1.6%
North Total		6605	6644	39	0.6%	3971	4003	32	0.8%
South	BRIDGE	763	648	-115	-15.1%	441	414	-27	-6.1%
	CLIFTON NORTH	527	545	18	3.4%	296	313	17	5.7%
	CLIFTON SOUTH	747	578	-169	-22.6%	458	454	-4	-0.9%
	DALES	790	877	87	11.0%	529	613	84	15.9%
	MAPPERLEY	837	901	64	7.6%	467	448	-19	-4.1%
	ST ANNS	847	941	94	11.1%	822	801	-21	-2.6%
South Total		4511	4490	-21	-0.5%	3013	3043	30	1.0%
Division		22784	22715	-69	-0.3%	12231	12010	-221	-1.8%
Previous Month's Performance					1.0%				-2.8%

Exception Reporting

Dwelling Burglary

Dwelling Burglary is showing both a month to date and year to date reduction.

Theft

Although Theft offences have seen a reduction compared to the same month last year, there is still a year to date increase. The table below shows the type of Theft offences occurring on the ward for the year to date. Also included is the percentage of Theft offences that related to the theft of a mobile phone.

In December Theft offences nearly halved compared to the previous month and show their lowest level to date. The figures also show that none of the offences in December related to the theft of a mobile phone.

Offence	Apr	May	Jun	Jul	Aug	Sep	Oct	Nov	Dec	Total
ABSTRACTING ELECTRICITY		1			1					2
THEFT BY EMPLOYEE				1						1
THEFT FROM AUTO MACHINE OR METER		1					1			2
THEFT FROM PERSON	2	4	3	2	3	3	13	6		36
THEFT FROM SHOP	7	3	3	3	4	4	2	6	4	36
THEFT IN DWELLING OTHER THAN AUTO MACHINE OR METER	6	5	5	4	4	2	3	5	1	35
THEFT OR UNAUTHORISED TAKING OF PEDAL CYCLE	1	2	2	2	3	2	1	1	3	17
THEFT OR UNLAWFUL TAKING OF MAIL	1									1
THEFT OTHER	9	11	13	12	9	3	12	7	4	80
Total	26	27	26	24	24	14	32	25	12	210
Phone Theft	12%	26%	46%	42%	21%	36%	56%	28%	0%	32%

Exception Reporting (continued)

Violence

Violence has reduced by one offence compared to the same month last year, but continues to show an increase for the year to date. The table below shows the type of violence occurring on a monthly basis together with the percentage of violence that is related to Domestic Violence. Although this month has seen relatively low levels of violence, the percentage of domestic violence is at its highest on the ward.

Offence	Apr	May	Jun	Jul	Aug	Sep	Oct	Nov	Dec	Total
ASSAULT WITH INJURY	8	16	14	18	17	20	30	19	12	156
COMMON ASSAULT	10	9	8	9	8	6	17	11	7	86
RACIALLY/RELIGIOUSLY AGGRAVATED HARASSMENT INC SEC 4 AND 5 POA	2	2	1		2	2	4		1	14
ASSAULT WITH INTENT TO CAUSE SERIOUS HARM	1	1	1	2	3	1	1		4	14
ASSAULT ON A CONSTABLE		1			2			3		6
HARASSMENT (PROTECTION FROM HARASSMENT)	1						1		3	5
FEAR/PROVOCATION VIOLENCE (SEC 4 POA)	1		1	1						3
HARASSMENT/ALARM/DISTRESS (SEC 5 POA)	1	1								2
CRUELTY TO CHILDREN/YOUNG PERSONS					1					1
KIDNAPPING/FALSE IMPRISONMENT								1		1
Total	24	30	25	30	33	29	53	34	27	288
DV Related	17%	43%	32%	33%	36%	21%	19%	41%	52%	32%

All Crime

Arboretum continues to have the highest crime rate per 1000 population for All Crime, Burglary, Robbery and Violence. A full breakdown of the crime rates for each ward can be found on page 8. Arboretum also has the highest rate for ASB and the ward breakdown can be found on page 9.

Micro Beat

The table below shows the level of crime and ASB on the Arboretum micro beat on a monthly basis. This shows that levels of crime, and in particular ASB have reduced on the micro beat in the past 2 months.

In December, crime in the micro beat area accounted for 22% of all crime in Arboretum. The micro beat also accounts for 22% of All Crime in Arboretum for the year to date. Similarly for the year to date 21% of ASB in Arboretum occurs in the micro beat but this percentage dropped to 16% during December.

Crime Type	Apr	May	Jun	Jul	Aug	Sep	Oct	Nov	Dec	Total
Autocrime	4	2	1	2	1	1	1			12
Burglary	2	1			4	4	3	4	2	20
Burglary Other		2						3		5
Damage	2	3	4	1	1	2	4	1	6	24
Drugs	4	3	7	5	4	1	2	1	3	30
Fraud	1	1		1			1			4
Other	1			2	4	2		1	1	11
Personal Robbery	3		2	2				1	1	9
Sexual		1	1			1	1		1	5
Theft	7	13	3	10	8	6	4	4	3	58
Threats		1				2				3
Violence	3	9	7	4	8	7	9	6	5	58
All Crime	27	36	25	27	30	26	25	21	22	239
ASB	22	19	17	20	22	17	18	9	12	156

Crime Figures

Crime Types by Rate (per 1000 of population) of the 20 Wards – Figures are Year to Date 2013/14

WARD	ALL CRIME	AUTOCRIME	BURGLARY	DAMAGE	PERSONAL ROBBERY	THEFT	VIOLENCE
ARBORETUM	99.06	5.74	9.60	12.56	5.47	15.52	24.85
ASPLEY	67.76	5.96	5.45	11.80	0.91	10.55	17.25
BASFORD	57.44	7.10	5.43	9.87	1.23	10.43	13.39
BERRIDGE	62.46	7.24	5.84	9.17	1.07	14.21	12.49
BESTWOOD	48.23	3.46	5.19	9.91	1.07	6.21	11.58
BILBOROUGH	56.87	6.73	5.36	10.24	0.95	8.99	12.68
BRIDGE	64.90	3.59	1.64	8.31	1.23	26.04	11.69
BULWELL	88.38	5.69	5.08	18.51	1.92	21.97	17.21
BULWELL FOREST	53.84	3.53	4.04	10.06	1.47	14.25	10.65
CLIFTON NORTH	41.43	3.03	4.11	8.69	1.16	5.66	8.46
CLIFTON SOUTH	41.44	2.51	5.31	7.10	0.86	7.31	10.76
DALES	53.28	4.56	2.73	10.08	0.49	11.36	11.54
DUNKIRK AND LENTON	67.95	10.26	6.68	6.41	0.73	21.43	9.43
LEEN VALLEY	54.48	4.58	5.61	8.78	1.68	11.12	10.00
MAPPERLEY	56.42	7.64	4.48	7.83	0.57	10.73	10.67
RADFORD AND PARK	58.59	8.17	6.43	5.41	1.89	16.69	8.93
SHERWOOD	62.09	5.64	5.97	6.49	1.82	21.41	11.16
ST ANNS	66.80	4.65	3.79	12.10	3.79	7.30	18.61
WOLLATON EAST AND LENTON ABBEY	35.57	3.11	5.73	3.62	0.30	12.86	3.52
WOLLATON WEST	29.03	4.75	4.14	3.39	0.27	7.67	2.85
WARD AVERAGE	58.30	5.40	5.13	9.02	1.44	13.09	11.89

All ASB Figures

All ASB by Rate (per 1000 of population) of the 20 Wards)

WARD	RATE (PER 1000 OF POP.) Dec 2013
ARBORETUM	6.82
ASPLEY	3.40
BASFORD	3.64
BERRIDGE	2.36
BESTWOOD	3.64
BILBOROUGH	3.22
BRIDGE	3.08
BULWELL	3.65
BULWELL FOREST	2.79
CLIFTON NORTH	2.25
CLIFTON SOUTH	2.01
DALES	3.95
DUNKIRK & LENTON	1.47
LEEN VALLEY	3.92
MAPPERLEY	2.02
RADFORD & PARK	2.14
SHERWOOD	1.62
ST ANNS	5.23
WOLLATON EAST & LENTON ABBEY	0.80
WOLLATON WEST	0.47
WARD AVERAGE	2.92

Fire

Table: Volume of Deliberate Primary and Secondary Fires by Ward

Fire Data									
Locality	Ward	Nov-12	Nov-13	Volume +/-	% Change	Ytd 12-13	Ytd 13-14	Volume +/-	% Change
Central	Arboretum	2	0	-2	-100%	13	18	5	38%
	Berridge	7	3	-4	-57%	35	29	-6	-17%
	Dunkirk and Lenton	1	2	1	100%	5	7	2	40%
	Radford and Park	1	1	0	0%	24	14	-10	-42%
	Sherwood	0	3	3	29900%	9	15	6	67%
	Wollaton East and Lenton Abbey	0	0	0	-100%	6	6	0	0%
	Wollaton West	0	0	0	-100%	2	3	1	50%
Central Locality		11	9	-2	-18%	94	92	-2	-2%
North	Aspley	1	0	-1	-100%	45	34	-11	-24%
	Basford	4	2	-2	-50%	40	26	-14	-35%
	Bestwood	5	0	-5	-100%	31	37	6	19%
	Bilborough	3	2	-1	-33%	34	19	-15	-44%
	Bulwell	6	7	1	17%	60	56	-4	-7%
	Bulwell Forest	0	1	1	9900%	28	12	-16	-57%
	Leen Valley	3	2	-1	-33%	20	20	0	0%
North Locality		22	14	-8	-36%	258	204	-54	-21%
South	Bridge	0	2	2	19900%	10	14	4	40%
	Clifton North	1	2	1	100%	10	9	-1	-10%
	Clifton South	2	1	-1	-50%	17	25	8	47%
	Dales	1	1	0	0%	6	13	7	117%
	Mapperley	2	0	-2	-100%	14	10	-4	-29%
	St. Anns	2	1	-1	-50%	22	23	1	5%
South Locality		8	7	-1	-13%	79	94	15	19%
Division		41	30	-11	-27%	431	390	-41	-10%

Note: Where ward boundaries overlap with the City Centre fires that occurred in the City Centre have been **included** in the ward figures.

Community Protection

Data has been received from Community Protection and where postcodes have been listed these have been geo-coded and mapped to determine the Ward. All addresses relate to the address of the Perpetrator.

FPNs are not currently available at ward level.

In December 2013 the following orders were issued:

- **2 x Statutory Notices for the Environment**
- **1 x ASBO on Conviction for ASB**

For enquiries regarding Community Protection court outcomes please contact the Operational Manager for the locality.

Cleanliness Index

Cleanliness Index
Score

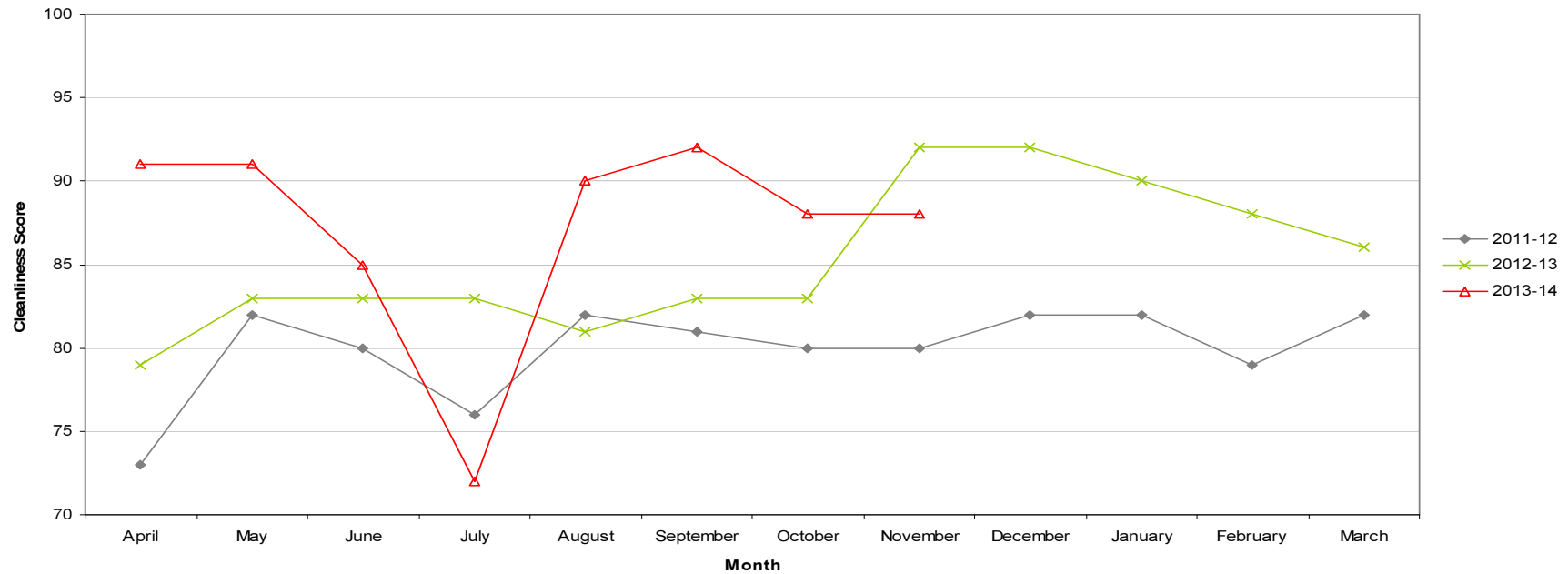
88

Performance compared to
previous year

Performance compared to
neighbourhoods target
of 86

- All data refers to a comparison with the previous year's month
- It is proposed that performance over time graphs be used for each indicator
- Historic data for comparison is not available for dog fouling

Cleanliness Index - Arboretum

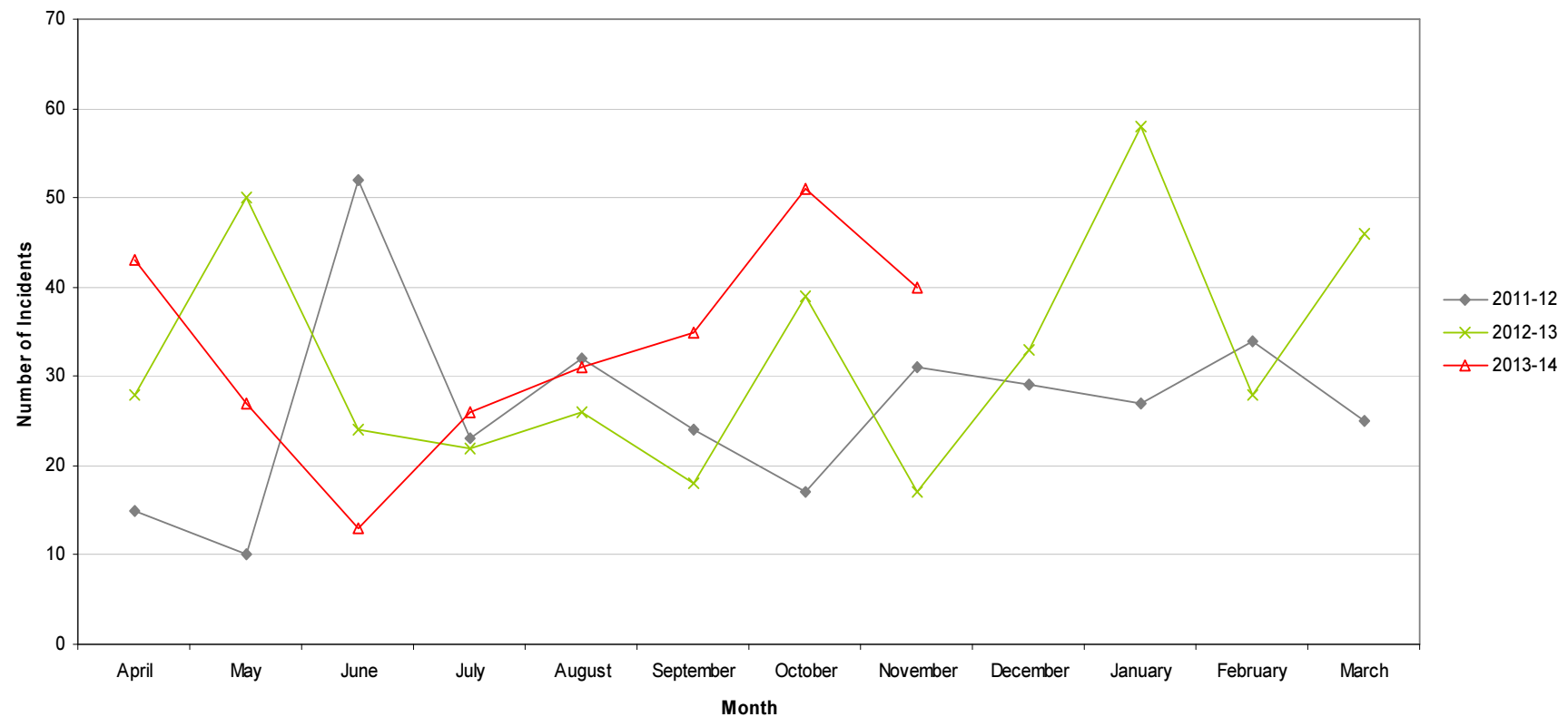


Graffiti Reports

RED	40 incidents	Increase of 23
AMBER		
GREEN		

- All data refers to a comparison with the previous year's month
- It is proposed that performance over time graphs be used for each indicator
- Historic data for comparison is not available for dog fouling

Incidents of Graffiti - Arboretum

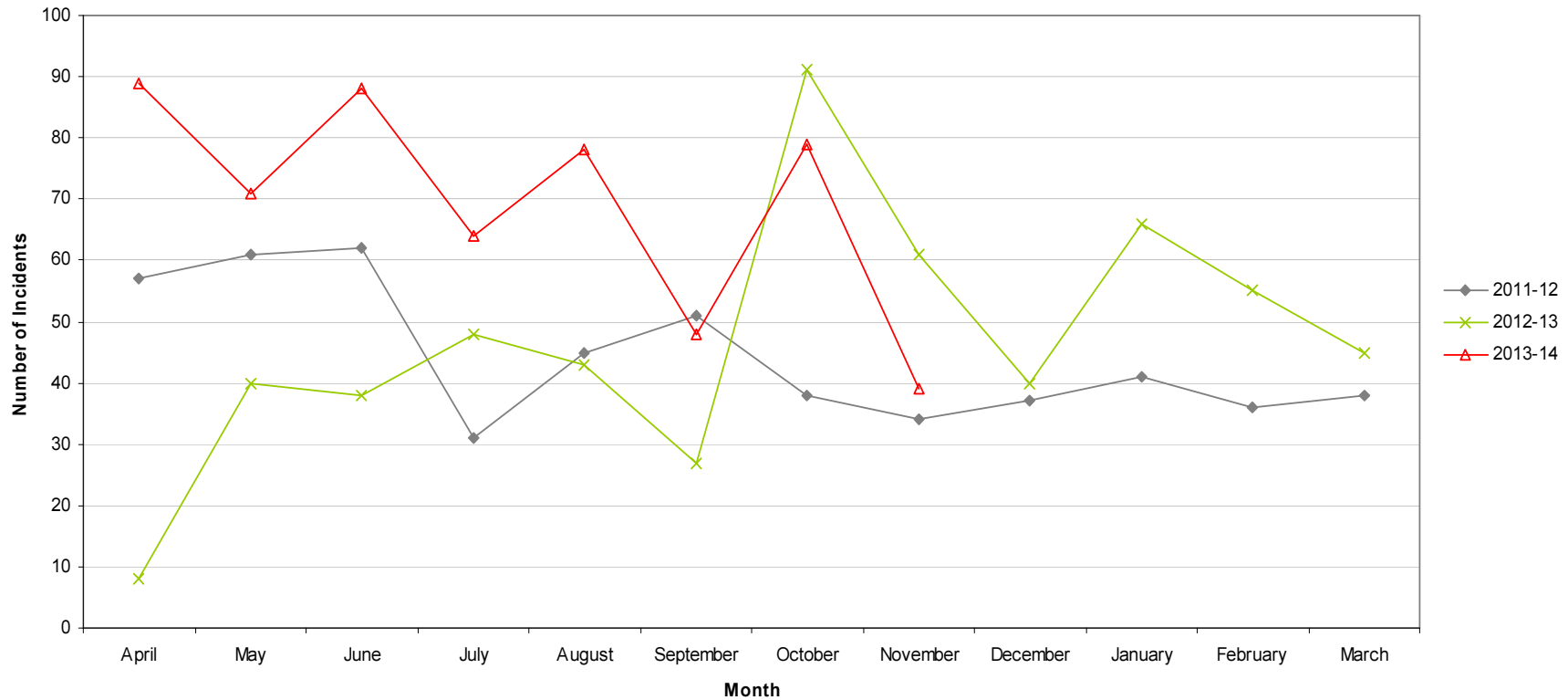


Fly Tipping

RED		
AMBER		
GREEN	39 incidents	Decrease of 22

- All data refers to a comparison with the previous year's month
- It is proposed that performance over time graphs be used for each indicator
- Historic data for comparison is not available for dog fouling

Incidents of Fly Tipping - Arboretum



Housing

Ward Report - Arboretum

Generated on: 18 December 2013



ARWA1 Anti-social behaviour

Performance indicator and definition	Target	2013/14			2012/13	2011/12
		Value	Status	Long Trend	Value	Value
% of ASB cases resolved by first intervention – Central region <i>Note: This PI monitors how many ASB cases NCH resolved on the first intervention e.g. written warning. Data for this indicator is not available by ward and is reported by Housing Office.</i>	76%	84.55%			78.92%	
% of ASB cases resolved – Central region <i>Note: This PI measures the proportion of ASB cases NCH has successfully resolved. Data for this PI is not available by ward and is reported by Housing Office.</i>	97.8%	100%			100%	97.53%
Number of new ASB cases – Central region <i>Note: Data for this PI is only available by Housing Office.</i>		104			144	229
Tenant satisfaction with the ASB service - Central region <i>Note: Data for this PI is only available by Housing Office.</i>	8	7.48			6.95	6

Housing

ARWA2 Repairs







Performance indicator and definition	Target	2013/14			2012/13	2011/12
		Value	Status	Long Trend	Value	Value
% of repairs completed in target – Arboretum ward <i>Note: This PI monitors the proportion of repairs being completed within agreed timescales.</i>	96%	96.24%			92.04%	95.42%
Tenant satisfaction with the repairs service <i>Note: Data for this PI is only available citywide</i>	8.8	8.69			8.64	8.65

ARWA3 Rent Collection



Performance indicator and definition	Target	2013/14			2012/13	2011/12
		Value	Status	Long Trend	Value	Value
% of rent collected – Central region <i>Note: This PI measures the amount of rent collected (including tenant arrears) as a percentage of rent due for the current year. Data for this indicator is not available by ward and is reported by Housing Office.</i> <i>Trend shows as improving if value is over 100% as arrears are decreasing.</i>	8.3%	99%			100.5%	100.6%
% of tenancies ending due to eviction <i>Note: This PI monitors the percentage of tenants being evicted due to rent arrears and is reported citywide.</i>	0.75%	0.69%			0.55%	0.61%

Housing

ARWA4 Empty properties

Performance indicator and definition	Target	2013/14			2012/13	2011/12
		Value	Status	Long Trend	Value	Value
Average void re-let time (calendar days) – Arboretum ward <i>Note: This PI measures how long it takes NCH to re-let empty properties from the end of the old tenancy to the start of the new tenancy.</i>	25	58.46			25.82	24.28
Number of empty properties awaiting decommission – Arboretum ward <i>Note: This PI shows the number of empty properties which will not be re-let and includes those being decommissioned and / or demolished.</i>		53			52	56
Number of lettable voids – Arboretum ward <i>Note: Lettable voids are empty properties available for re-letting. They will receive repair work and then be re-let to a new tenant.</i>		2			5	9

ARWA5 Tenancy sustainment

Performance indicator and definition	Target	2013/14			2012/13	2011/12
		Value	Status	Long Trend	Value	Value
Percentage of new tenancies sustained - Arboretum Ward (2003) <i>Note: This PI measures the number of new tenants who are still in their tenancy 12 months later.</i>	93.5%	87.5%			78.38%	

Housing

Key:



Performance on or exceeding target



Performance below target



Data only performance indicator



Performance has improved compared to two years ago



Performance has deteriorated compared to two years ago



Performance unchanged

Data prepared by Nottingham City Homes Performance Team

For more information please contact Jonathan Hurst, Performance Data Officer on 0115 9157368 or Marcus Parton, Performance Analyst on 0115 915715

Methodology

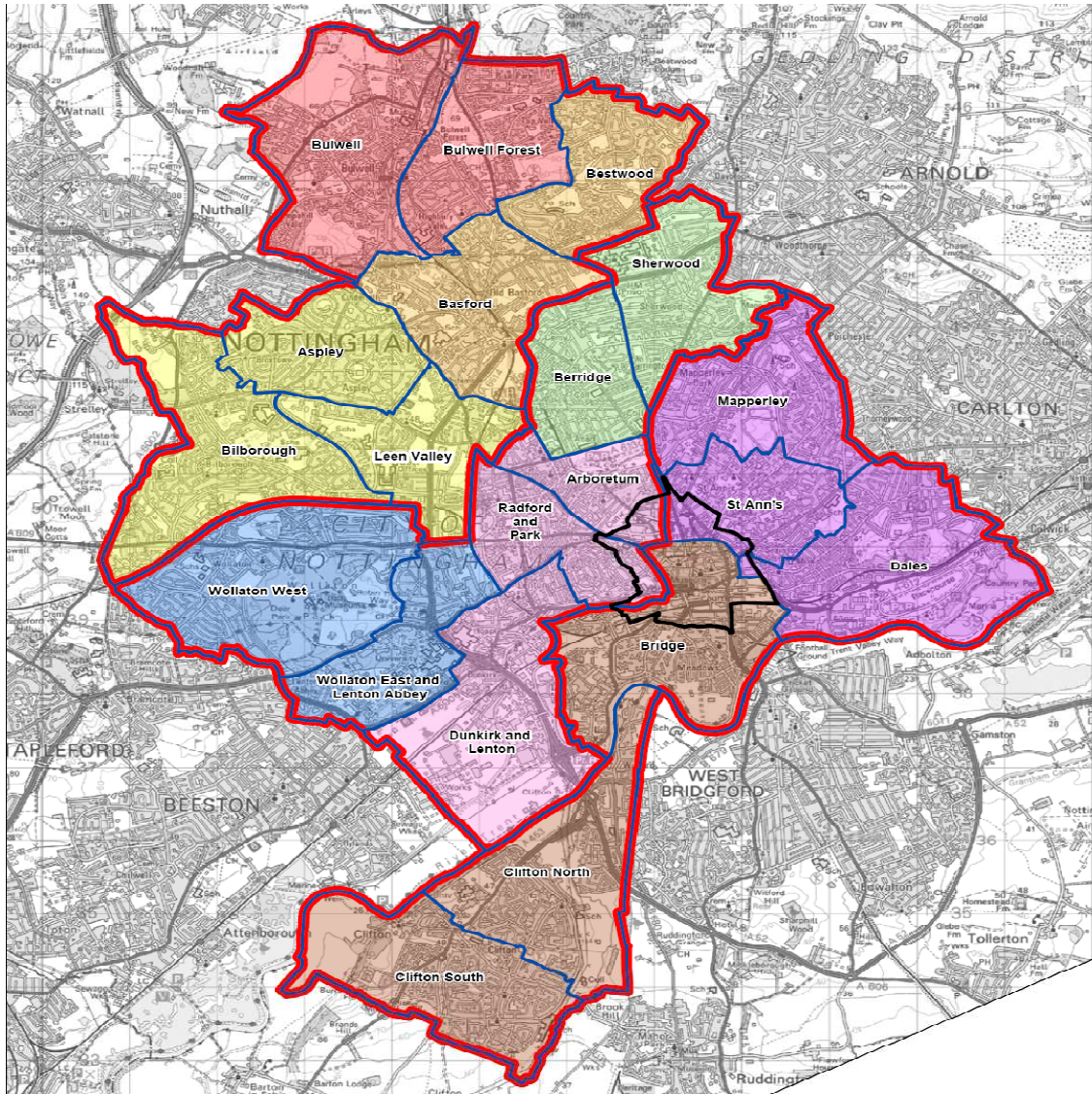
Data has not been audited or verified and therefore must only be used as a reflection of crime.

Crime data and ASB calls have been extracted from the Police systems and mapped to ascertain which Ward they occurred in.

Where a ward boundary overlaps with the City Centre, crime data and ASB calls relating to the City Centre have been removed.

Where possible the most recent data is used, although for some areas this may be a month further in arrears.

Discussions continue with other agencies regarding what further data can be included.



Dunkirk and Lenton

Area Committee Report

Unofficial December 2013
Data

Ward Priorities

Theme	Priorities	Key Actions	Outcome	Lead
Neighbourhoods	<p>Tackling all environmental crime in the ward including night-time noise, dog fouling, bins blocking pavement outside of collection dates, overflowing and contaminated bins, bin dippers, poorly maintained gardens, and broken glass from bottles left over-night, littering and fly-tipping.</p>	<ul style="list-style-type: none"> •Op Graduate will re-start Jan/Feb 2014, coinciding with students return. •Redesigned Make Time For Tea campaign ran in place of Sweet Neighbour – distributed over 1200 postcards and teabags in first two weeks of term. Neighbourhood Helpline continues to be promoted. •Nov/Dec have been fairly quiet, 7 noise incidents reported, Community Protection and University working together to tackle this. •2 Dog fouling operations in Dunkirk on Beeston Rd and Abbey Bridge in Nov/Dec. •During Nov/Dec 170 s.46 'Bins on pavement' issued from which 79 resulted in fines, advice given to the rest. • Day of Action on Grove Rd, Cecil St and Chippendale 27th Nov. Locks on alley-way gates changed and bins removed from pavements. Another clean up day planned for Penn Ave and Friary Close, Lenton Blvd Improvement Plan and Ward walks ongoing. • LBA's (Letter before Action); 40 issued for various issues, Untidy gardens, Rubbish and side waste. • 1 Littering Operation at QMC. + 1 further planned for Feb 2014 to target cycle theft and littering. •Continue to develop the Student Waste Action Plan, Issue Fixed Penalty Notices in respect of all littering offences including fly-posting, fly-tipping, bin dipping where evidence permits, plain clothed operations in hot spot areas, Undertake area inspections of all businesses within the ward to ensure that they are storing and disposing of waste in accordance with legal requirements • An increased focus on waste management in the University's plan for 2013/14. A student ambassador-led campaign in planning stages – expected to be launched early 2014. •Regular Canal clean-ups and garden project at Lenton/Radford Library. 	<ul style="list-style-type: none"> •More peace for local residents, a more tranquil environment. •Increased reporting •More effective response to noise nuisance <p>Decrease in dog fouling/ Cleaner streets</p> <p>Improved visual amenity</p> <p>Cleaner Neighbourhood</p>	<p>Police</p> <p>University of Nottingham</p> <p>Neighbourhood Services/Community Protection</p> <p>Neighbourhood Services/Community Protection</p> <p>Neighbourhood Services/Community Protection</p> <p>University of Nottingham</p> <p>Dunkirk and Lenton Partnership Forum</p>

Theme	Priorities	Key Actions	Outcome	Lead
Safer	<p>Reduce burglaries</p> <p>Cycling on pavement</p>	<ul style="list-style-type: none"> •In 2013/14 Op Country will be replaced by Op Graduate, greater resource will be supplied by the division and micro-beat patrolling system used •Love Your Stuff to re-start end of Jan 2014, previously 356 properties engaged. Members of staff have gone out on patrol with Police working Op Graduate. •Awareness campaign of keeping properties safe, highlighting necessity of locking UPVC doors. •<u>2</u> Cycling on Pavement Operations on Montpellier Rd and Abbey Bridge.Outcome 5 Cycling Traffic Offence Notices given and 9 warnings. •Currently working on a student-led project on cycling, launch possibly New Year. •Cycling signs reviewed in Aug, exploring funding options •Create links between new green spaces to making cycling/walking a safer and pleasant experience- determining route and exploring funding options 	<p>Higher profile operation leading to decrease in burglary and increase in confidence.</p> <p>Increased presence will have positive effect on ASB in New Lenton.</p> <p>Reduction in incidents</p> <p>Safer environment for pedestrian</p> <p>Improved walking/cycling/cohesion</p> <p>Creation of a green corridor between Lenton flats site /Sandfield across to Radford and canal</p>	<p>Police</p> <p>University of Nottingham</p> <p>Community Protection Neighbourhood Services</p> <p>Community Protection</p> <p>University of Nottingham</p> <p>Cycling Strategy Officer DLPF</p>
Health	<p>Lack of local accessible shops selling fresh fruit and vegetables</p> <p>Promoting positive mental health</p>	<ul style="list-style-type: none"> •Changes in Health Promotion team, now have City-wide focus, not locality.Healthy eating and cooking taster session at Dunkirk Community Centre, 15 residents participated in Nov. •Ongoing, Ecoworks boxes available for collection from DLPF •On-going, Student Services at the University offers a wide range of support for the mental health of students •On-going, Tommys, Crocus café/gallery 	<p>Improved health</p> <p>Reduction in Obesity</p> <p>Increased cookery skills</p> <p>Reduction in CVD and diabetics</p> <p>Improved cohesion</p> <p>Reducing isolation</p>	<p>Decade of better Health</p> <p>DLPF</p> <p>University of Nottingham</p> <p>Voluntary Organisation</p>
Work	<p>Communication strategy for employment opportunities</p>	<ul style="list-style-type: none"> •Weekly Job and Apprenticeships vacancies sent to DLPF •Suggestions to support Dunkirk Comm Centre & Thomas Always Baptist Church to provide employment support <p>Visited 40 businesses in the ward to give information on incentives of Nottingham Jobs Fund and Apprentice Grant .</p>	<p>Increase of employment in area</p>	<p>Employment & Skills Team</p> <p>DLPF</p> <p>NDO</p>
Family	<p>Better use of local venues</p>	<ul style="list-style-type: none"> •Parks events during summer hols of 2013. Attendance was sporadic and dropped off from Sept '13. Decision made in Dec 13 to cease sessions due to dark nights and bad weather. • Penn Ave sessions have also ceased due to low attendance •Options for delivering at DComm Centre not pursued due to low numbers of children in the area. Instead supporting TLC on Weds eves and are targeting local C&YP in the development of sessions run from there. Activ8th continues regularly. 	<p>More access to activity.</p> <p>Activity is more visible in community</p>	<p>Family and Community</p> <p>Activ8th</p>

Community Engagement

Ward Walks

Area/Estate	Date/Time	Meeting Point
Penn Avenue area	Tue 14th Jan 2014, 10.30am to 12pm	Penn Ave Car park
Hillside and QMC	Tue 11 th Feb 2014, 10.30am to 12pm	Hillside shops
Lenton High-rise flats/Lenton Blvd	Tue 11 th March 2014, 10.30am to 12pm	Church Square Lenton
Dunkirk and Abbey Bridge	Tue 8 th April 2014, 10.30am to 12pm	Dunkirk Community Centre

Community Meetings

Group	Date	Venue
Lenton Community meeting	28 th Feb 2014, 5.30pm to 7.00pm	Thomas Helwys Baptist Church
NAG Meeting	26 th Feb 2014, 6.30pm	Rose and Crown Pub, Derby Rd
Dunkirk Community meeting	Wednesday 26 th March 2014	Dunkirk Community Centre

Community Engagement

Events Delivered

Event	Lead Partners	Date/Time	Venue
Day of Action in Lenton	Neighbourhood Services and Partners	27 th Nov, 10am to 3pm	Cecil, Chippendale and Grove Road
Area 4 Christmas tree event	Neighbourhood Services and Partners	21 st Nov, 3pm to 6pm	Canning Circus
Area 4 Christmas light switch on	Neighbourhood Services and Partners	21 st Nov, 3pm to 6pm	Canning Circus

Future Events and Activities Planned

Event	Lead Partners	Date/Time	Venue
Budget Consultation 2014	Neighbourhood Services and NAG	29 th Jan, 6.30pm to 8pm	Rose and Crown Pub, Derby Rd
Day of Action Penn Ave	Neighbourhood Services and Partners	End of Feb, TBC	Penn Ave
Spring Planting and Consultation Friary Close	Neighbourhood Services and Partners	Week commencing 17 th March 2014. 1pm to 3pm	Friary Close

Finance

Ward Councillor Budgets

Total Amount allocated this period £7,700

Budget Remaining Unallocated £25,362 (inc of 2012-13 allocation)

Area Capital Fund

Total Amount allocated this period £6,449

Budget Remaining Unallocated £99,443 (inc of 2012-13 allocation)

Others – Section 106, NCH Environmentals, Other Funding

NCH Environmental

Total Amount allocated this period £26,552

Budget Remaining Unallocated £26,552

Ward Summary

Crime data is shown below for both the current month compared to last year and the year to date.

Ward	Type	Dec-12	Dec-13	Volume +/-	% Change	YTD 12-13	YTD 13-14	Volume +/-	% Change
DUNKIRK & LENTON	Autocrime	5	12	7	140%	128	112	-16	-13%
	Burglary	9	6	-3	-33%	75	73	-2	-3%
	Burglary Other	4	1	-3	-75%	36	31	-5	-14%
	Damage	9	6	-3	-33%	80	70	-10	-13%
	Drugs	5	2	-3	-60%	42	36	-6	-14%
	Fraud			0		8	6	-2	-25%
	Other	1	4	3	300%	9	22	13	144%
	Personal Robbery	1		-1	-100%	11	8	-3	-27%
	Robbery Business			0			1	1	
	Sexual	5	2	-3	-60%	12	13	1	8%
	Theft	25	24	-1	-4%	272	245	-27	-10%
	Threats	6	2	-4	-67%	21	24	3	14%
	Violence	16	11	-5	-31%	112	103	-9	-8%
	DUNKIRK & LENTON Total		86	70	-16	-19%	806	744	-62
ASB		24	16	-8	-33%	348	273	-75	-22%

The summary below shows only year to date figures, and in the case of public realm and fire data, will generally be a month in arrears.

Type	YTD 12-13	YTD 13-14	Volume +/-	% Change
Domestic Violence Crime	27	24	-3	-11%
Night Time Economy Violence	7	3	-4	-57%
Hate Crime	14	10	-4	-29%
Deliberate Fires	5	7	2	40%
Cleanliness (Average Score)	85	87	2	2%
Graffiti	103	57	-46	-45%
Fly-Tipping	77	124	47	61%

Priorities & Targets

The Central Locality has targets to reduce Dwelling Burglary, Shop Theft and Violence. The Locality's performance against Targets is set out below. This shows that the target is being met for Dwelling Burglary, but not for Shop Theft or Violent Crime.

Locality Target Summary																
Locality	Crime Type	Apr-13	May-13	Jun-13	Jul-13	Aug-13	Sep-13	Oct-13	Nov-13	Dec-13	Jan-14	Feb-14	Mar-14	YTD	Proposed year end Position	+/- Target Position
Central	Dwelling Burglary	96	77	71	65	56	59	55	79	69	75	75	75	627	890	-38
	Shop Theft	88	71	96	55	54	27	54	52	57	40	40	40	554	644	30
	Violence	96	114	115	130	130	110	145	109	113	84	84	84	1062	1173	141

Ward Performance

The table below shows how Dunkirk & Lenton is performing year to date for All Crime and ASB in comparison to the other wards on the Division. High Impact wards are highlighted in blue.

Dunkirk & Lenton is one of the few wards to be showing a reduction in both All Crime and ASB.

Dec 2013		All Crime				ASB			
Locality	Ward	YTD 12/13	YTD 13/14	Change	% Change	YTD 12/13	YTD13/14	Change	% Change
Central	ARBORETUM	968	1109	141	14.6%	712	757	45	6.3%
	BERRIDGE	1149	1171	22	1.9%	821	737	-84	-10.2%
	DUNKIRK & LENTON	807	744	-63	-7.8%	348	273	-75	-21.6%
	RADFORD & PARK	1119	1150	31	2.8%	605	682	77	12.7%
	SHERWOOD	780	985	205	26.3%	351	388	37	10.5%
	WOLLATON EAST & LENTON ABBEY	330	354	24	7.3%	110	117	7	6.4%
	WOLLATON WEST	377	430	53	14.1%	140	138	-2	-1.4%
Central Total		5530	5943	413	7.5%	3087	3092	5	0.2%
City	CITY CENTRE	6138	5638	-500	-8.1%	2160	1872	-288	-13.3%
North	ASPLEY	1326	1194	-132	-10.0%	755	704	-51	-6.8%
	BASFORD	903	940	37	4.1%	542	511	-31	-5.7%
	BESTWOOD	734	808	74	10.1%	491	643	152	31.0%
	BILBOROUGH	968	956	-12	-1.2%	615	611	-4	-0.7%
	BULWELL	1438	1428	-10	-0.7%	919	822	-97	-10.6%
	BULWELL FOREST	689	735	46	6.7%	345	403	58	16.8%
	LEEN VALLEY	547	583	36	6.6%	304	309	5	1.6%
North Total		6605	6644	39	0.6%	3971	4003	32	0.8%
South	BRIDGE	763	648	-115	-15.1%	441	414	-27	-6.1%
	CLIFTON NORTH	527	545	18	3.4%	296	313	17	5.7%
	CLIFTON SOUTH	747	578	-169	-22.6%	458	454	-4	-0.9%
	DALES	790	877	87	11.0%	529	613	84	15.9%
	MAPPERLEY	837	901	64	7.6%	467	448	-19	-4.1%
	ST ANNS	847	941	94	11.1%	822	801	-21	-2.6%
South Total		4511	4490	-21	-0.5%	3013	3043	30	1.0%
Division		22784	22715	-69	-0.3%	12231	12010	-221	-1.8%
Previous Month's Performance					1.0%				-2.8%

Exception Reporting

Dwelling Burglary

Dwelling Burglary levels are showing a reduction compared to the same month last year and for the year to date.

Theft

Although showing a reduction for both the month and the year to date, Theft is the main volume offence on the ward. The table below shows the type of theft occurring on the ward and also the percentage of thefts where mobile phones are the target property. There was an increase in the percentage of mobile phones stolen during December. 8 of the 13 Theft Other offences in December occurred at the Queens Medical Centre

Offence	Apr	May	Jun	Jul	Aug	Sep	Oct	Nov	Dec	Total
THEFT OTHER	5	9	8	11	13	19	14	16	13	108
THEFT OR UNAUTHORISED TAKING OF PEDAL CYCLE	8	9	10	3	8	4	10	11	7	70
THEFT FROM SHOP	5	6	8	3	3	1	2	1	3	32
THEFT BY EMPLOYEE	1	1	1	1	4	2	2		1	13
THEFT IN DWELLING OTHER THAN AUTO MACHINE OR METER		3	4	1	1		1	2		12
THEFT FROM PERSON		3	3	1		1	2			10
Total	19	31	34	20	29	27	31	30	24	245
% Mobile Phone theft	16%	13%	12%	10%	10%	11%	16%	13%	29%	14%

Exception Reporting (continued)

Violence

Dunkirk and Lenton is one of only two wards showing a reduction in Violent Crime for the year to date. The majority of offences in December relate to both the QMC and a Childrens Home. Only 18% (2 offences) in December related to Domestic Violence, which is a similar proportion to figures for the year to date.

Autocrime

The ward has seen an increase in Autocrime this month, compared to the same month last year and compared to recent months. All offences were Theft from Vehicle and the majority occurred on Lenton Boulevard in the early part of December. Items such as Sat Navs and a laptop were stolen.

All Crime

Dunkirk & Lenton has a higher than average crime rate across a number of crime categories, although this is likely to be due to the makeup of the ward. A full breakdown can be found on Page 7. The levels of ASB however are below the average rate, as shown on Page 8.

Crime Figures

Crime Types by Rate (per 1000 of population) of the 20 Wards – Figures are Year to Date 2013/14

WARD	ALL CRIME	AUTOCRIME	BURGLARY	DAMAGE	PERSONAL ROBBERY	THEFT	VIOLENCE
ARBORETUM	99.06	5.74	9.60	12.56	5.47	15.52	24.85
ASPLEY	67.76	5.96	5.45	11.80	0.91	10.55	17.25
BASFORD	57.44	7.10	5.43	9.87	1.23	10.43	13.39
BERRIDGE	62.46	7.24	5.84	9.17	1.07	14.21	12.49
BESTWOOD	48.23	3.46	5.19	9.91	1.07	6.21	11.58
BILBOROUGH	56.87	6.73	5.36	10.24	0.95	8.99	12.68
BRIDGE	64.90	3.59	1.64	8.31	1.23	26.04	11.69
BULWELL	88.38	5.69	5.08	18.51	1.92	21.97	17.21
BULWELL FOREST	53.84	3.53	4.04	10.06	1.47	14.25	10.65
CLIFTON NORTH	41.43	3.03	4.11	8.69	1.16	5.66	8.46
CLIFTON SOUTH	41.44	2.51	5.31	7.10	0.86	7.31	10.76
DALES	53.28	4.56	2.73	10.08	0.49	11.36	11.54
DUNKIRK AND LENTON	67.95	10.26	6.68	6.41	0.73	21.43	9.43
LEEN VALLEY	54.48	4.58	5.61	8.78	1.68	11.12	10.00
MAPPERLEY	56.42	7.64	4.48	7.83	0.57	10.73	10.67
RADFORD AND PARK	58.59	8.17	6.43	5.41	1.89	16.69	8.93
SHERWOOD	62.09	5.64	5.97	6.49	1.82	21.41	11.16
ST ANNS	66.80	4.65	3.79	12.10	3.79	7.30	18.61
WOLLATON EAST AND LENTON ABBEY	35.57	3.11	5.73	3.62	0.30	12.86	3.52
WOLLATON WEST	29.03	4.75	4.14	3.39	0.27	7.67	2.85
WARD AVERAGE	58.30	5.40	5.13	9.02	1.44	13.09	11.89

All ASB Figures

All ASB by Rate (per 1000 of population) of the 20 Wards)

WARD	RATE (PER 1000 OF POP.) Dec 2013
ARBORETUM	6.82
ASPLEY	3.40
BASFORD	3.64
BERRIDGE	2.36
BESTWOOD	3.64
BILBOROUGH	3.22
BRIDGE	3.08
BULWELL	3.65
BULWELL FOREST	2.79
CLIFTON NORTH	2.25
CLIFTON SOUTH	2.01
DALES	3.95
DUNKIRK & LENTON	1.47
LEEN VALLEY	3.92
MAPPERLEY	2.02
RADFORD & PARK	2.14
SHERWOOD	1.62
ST ANNS	5.23
WOLLATON EAST & LENTON ABBEY	0.80
WOLLATON WEST	0.47
WARD AVERAGE	2.92

Fire

Table: Volume of Deliberate Primary and Secondary Fires by Ward

Fire Data									
Locality	Ward	Nov-12	Nov-13	Volume +/-	% Change	Ytd 12-13	Ytd 13-14	Volume +/-	% Change
Central	Arboretum	2	0	-2	-100%	13	18	5	38%
	Berridge	7	3	-4	-57%	35	29	-6	-17%
	Dunkirk and Lenton	1	2	1	100%	5	7	2	40%
	Radford and Park	1	1	0	0%	24	14	-10	-42%
	Sherwood	0	3	3	29900%	9	15	6	67%
	Wollaton East and Lenton Abbey	0	0	0	-100%	6	6	0	0%
	Wollaton West	0	0	0	-100%	2	3	1	50%
Central Locality		11	9	-2	-18%	94	92	-2	-2%
North	Aspley	1	0	-1	-100%	45	34	-11	-24%
	Basford	4	2	-2	-50%	40	26	-14	-35%
	Bestwood	5	0	-5	-100%	31	37	6	19%
	Bilborough	3	2	-1	-33%	34	19	-15	-44%
	Bulwell	6	7	1	17%	60	56	-4	-7%
	Bulwell Forest	0	1	1	9900%	28	12	-16	-57%
	Leen Valley	3	2	-1	-33%	20	20	0	0%
North Locality		22	14	-8	-36%	258	204	-54	-21%
South	Bridge	0	2	2	19900%	10	14	4	40%
	Clifton North	1	2	1	100%	10	9	-1	-10%
	Clifton South	2	1	-1	-50%	17	25	8	47%
	Dales	1	1	0	0%	6	13	7	117%
	Mapperley	2	0	-2	-100%	14	10	-4	-29%
	St. Anns	2	1	-1	-50%	22	23	1	5%
South Locality		8	7	-1	-13%	79	94	15	19%
Division		41	30	-11	-27%	431	390	-41	-10%

Note: Where ward boundaries overlap with the City Centre fires that occurred in the City Centre have been **included** in the ward figures.

Community Protection

Data has been received from Community Protection and where postcodes have been listed these have been geo-coded and mapped to determine the Ward. All addresses relate to the address of the Perpetrator.

FPNs are not currently available at ward level.

In December 2013 the following orders were issued:

- **1 x Caution for the Environment**

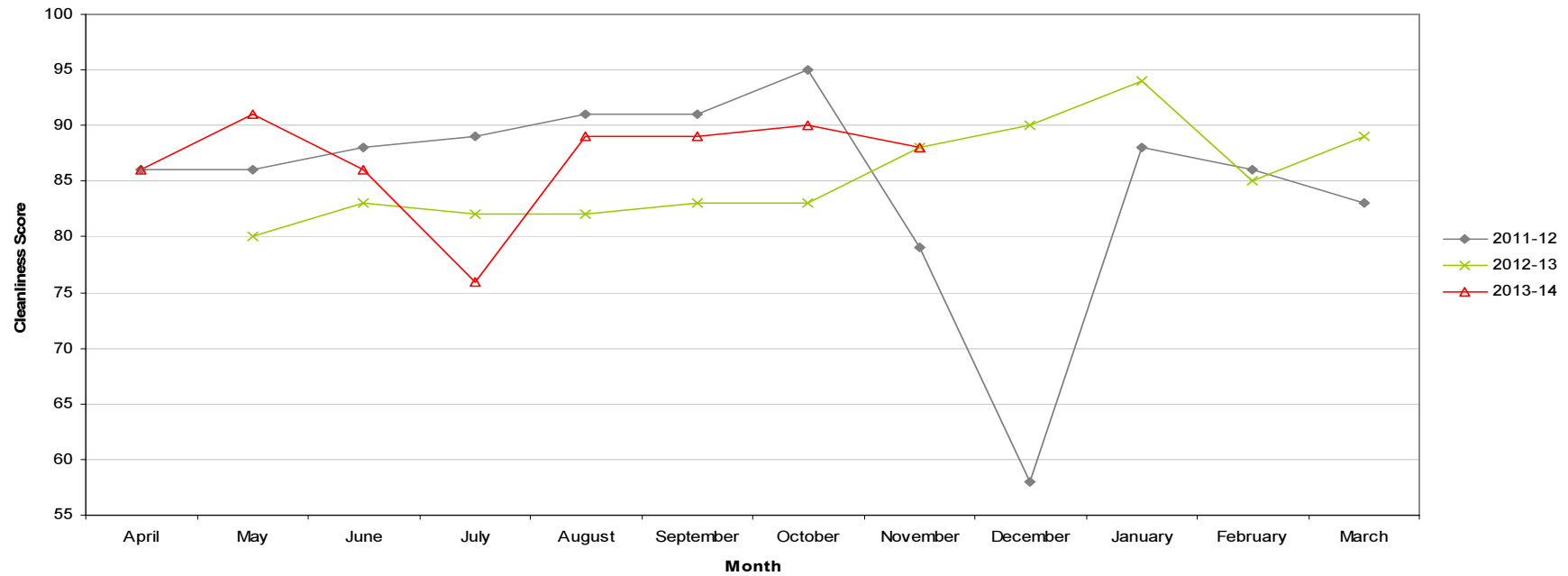
For enquiries regarding Community Protection court outcomes please contact the Operational Manager for the locality.

Cleanliness Index

Cleanliness Index Score	88
Performance compared to previous year	⬇️
Performance compared to neighbourhoods target of 86	

- All data refers to a comparison with the previous year's month
- It is proposed that performance over time graphs be used for each indicator
- Historic data for comparison is not available for dog fouling

Cleanliness Index - Dunkirk & Lenton

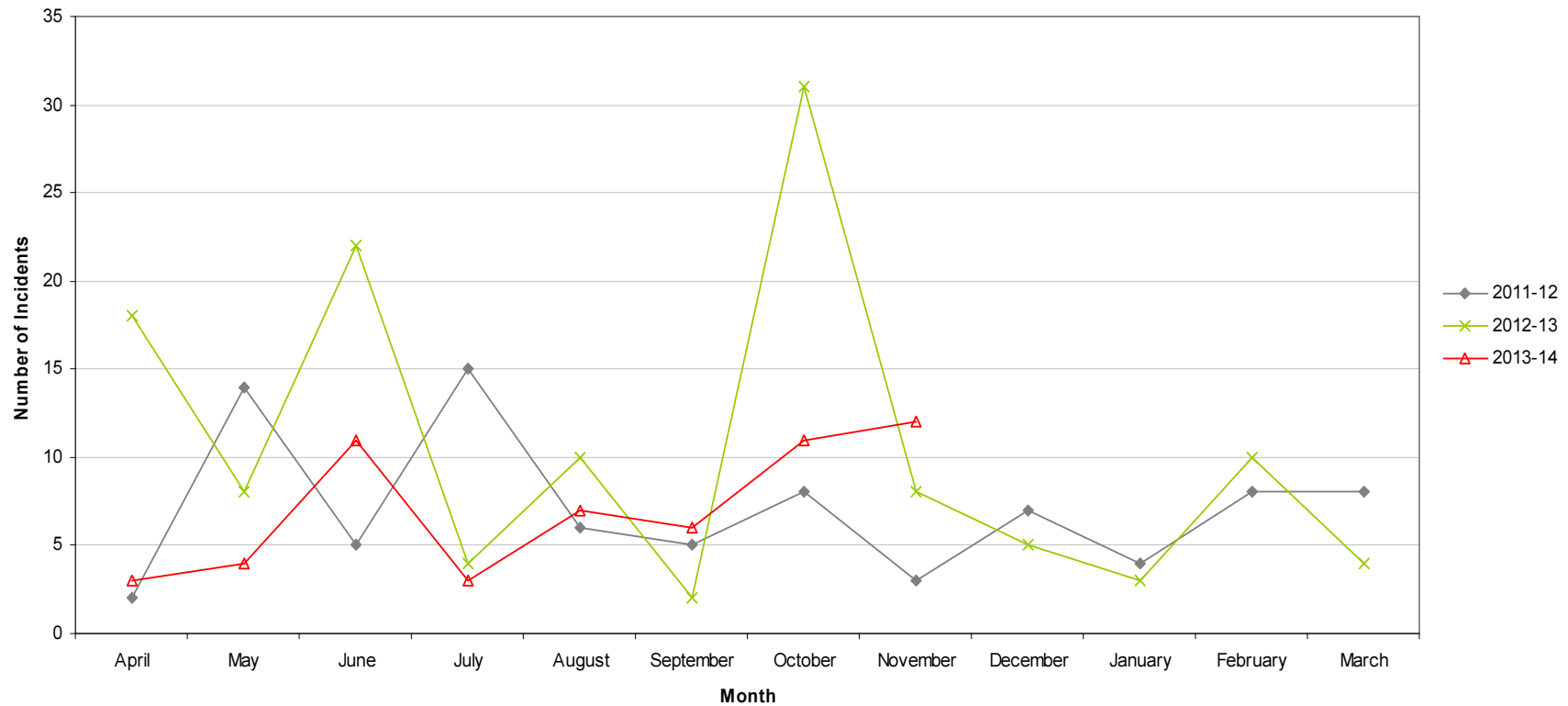


Graffiti Reports

RED	12 incidents	Increase of 4
AMBER		
GREEN		

- All data refers to a comparison with the previous year's month
- It is proposed that performance over time graphs be used for each indicator
- Historic data for comparison is not available for dog fouling

Incidents of Graffiti - Dunkirk & Lenton

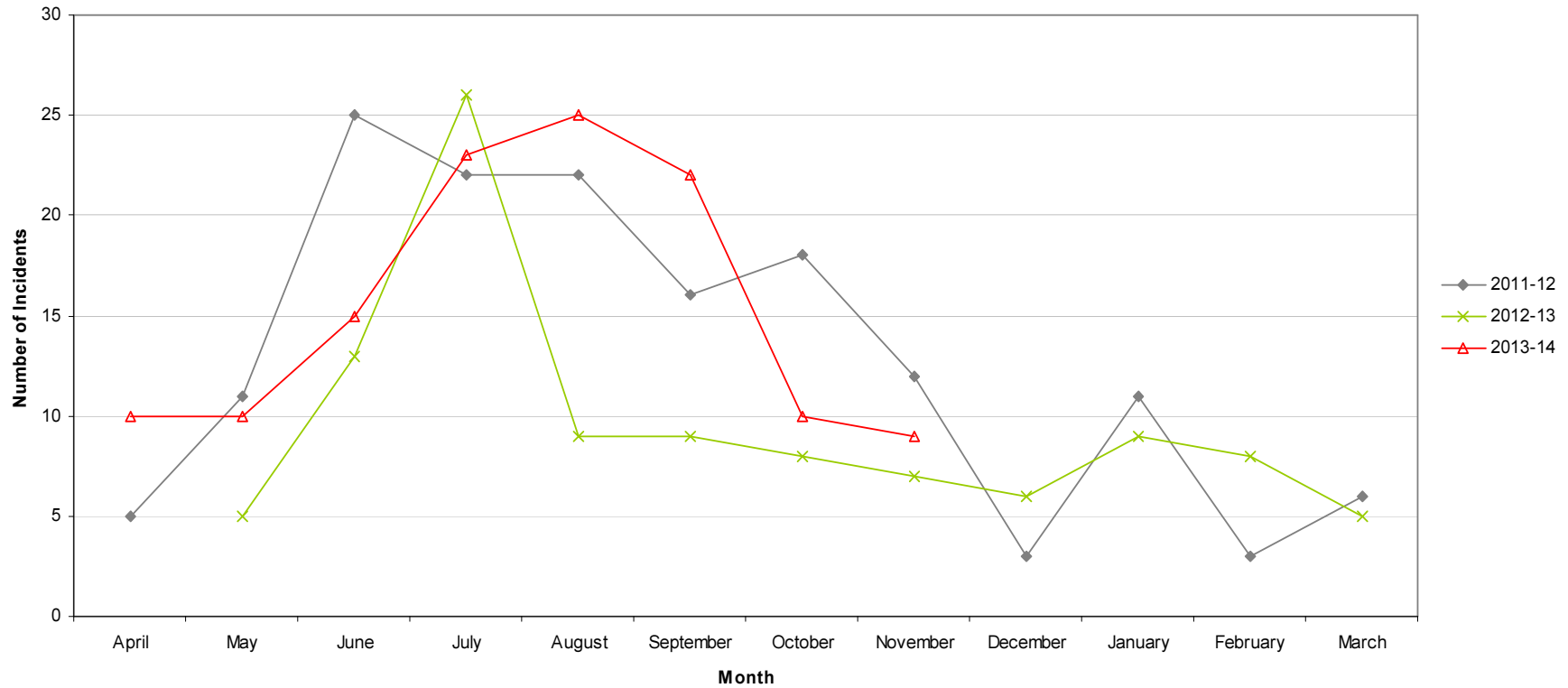


Fly Tipping

RED	9 incidents	Increase of 2
AMBER		
GREEN		

- All data refers to a comparison with the previous year's month
- It is proposed that performance over time graphs be used for each indicator
- Historic data for comparison is not available for dog fouling

Incidents of Fly Tipping - Dunkirk & Lenton



Housing

Ward Report - Dunkirk & Lenton

Generated on: 18 December 2013



Anti-social behaviour

Performance indicator and definition	Target	2013/14			2012/13	2011/12
		Value	Status	Long Trend	Value	Value
% of ASB cases resolved by first intervention – Central region <i>Note: This PI monitors how many ASB cases NCH resolved on the first intervention e.g. written warning. Data for this indicator is not available by ward and is reported by Housing Office.</i>	76%	84.55%			78.92%	
% of ASB cases resolved – Central region <i>Note: This PI measures the proportion of ASB cases NCH has successfully resolved. Data for this PI is not available by ward and is reported by Housing Office.</i>	97.8%	100%			100%	97.53%
Number of new ASB cases – Central region <i>Note: Data for this PI is only available by Housing Office.</i>		104			144	229
Tenant satisfaction with the ASB service - Central region <i>Note: Data for this PI is only available by Housing Office.</i>	8	7.48			6.95	6

Housing

Repairs







Performance indicator and definition	Target	2013/14			2012/13	2011/12
		Value	Status	Long Trend	Value	Value
% of repairs completed in target – Dunkirk & Lenton Ward <i>Note: This PI monitors the proportion of repairs being completed within agreed timescales.</i>	96%	97.82%			96.33%	96.3%
Tenant satisfaction with the repairs service <i>Note: Data for this PI is only available citywide</i>	8.8	8.69			8.64	8.65

Rent Collection



Performance indicator and definition	Target	2013/14			2012/13	2011/12
		Value	Status	Long Trend	Value	Value
% of rent collected – Central region <i>Note: This PI measures the amount of rent collected (including tenant arrears) as a percentage of rent due for the current year. Data for this indicator is not available by ward and is reported by Housing Office.</i> <i>Trend shows as improving if value is over 100% as arrears are decreasing.</i>	8.3%	99%			100.5%	100.6%
% of tenancies ending due to eviction <i>Note: This PI monitors the percentage of tenants being evicted due to rent arrears and is reported citywide.</i>	0.75%	0.69%			0.55%	0.61%

Housing

Empty properties

Performance indicator and definition	Target	2013/14			2012/13	2011/12
		Value	Status	Long Trend	Value	Value
Average void re-let time (calendar days) – Dunkirk & Lenton Ward <i>Note: This PI measures how long it takes NCH to re-let empty properties from the end of the old tenancy to the start of the new tenancy</i>	25	6.17			15	18.72
Number of empty properties awaiting decommission – Dunkirk & Lenton Ward <i>Note: This PI shows the number of empty properties which will not be re-let and includes those being decommissioned and / or demolished.</i>		246			162	39
Number of lettable voids – Dunkirk & Lenton Ward <i>Note: Lettable voids are empty properties available for re-letting. They will receive repair work and then be re-let to a new tenant.</i>		1			2	1

Tenancy sustainment

Performance indicator and definition	Target	2013/14			2012/13	2011/12
		Value	Status	Long Trend	Value	Value
Percentage of new tenancies sustained - Dunkirk & Lenton Ward <i>Note: This PI measures the number of new tenants who are still in their tenancy 12 months later.</i>	93.5%	83.33%			97.06%	

Housing

Key:



Performance on or exceeding target



Performance below target



Data only performance indicator



Performance has improved compared to two years ago



Performance has deteriorated compared to two years ago



Performance unchanged

Data prepared by Nottingham City Homes Performance Team

For more information please contact Jonathan Hurst, Performance Data Officer on 0115 9157368 or Marcus Parton, Performance Analyst on 0115 915715

Methodology

Data has not been audited or verified and therefore must only be used as a reflection of crime.

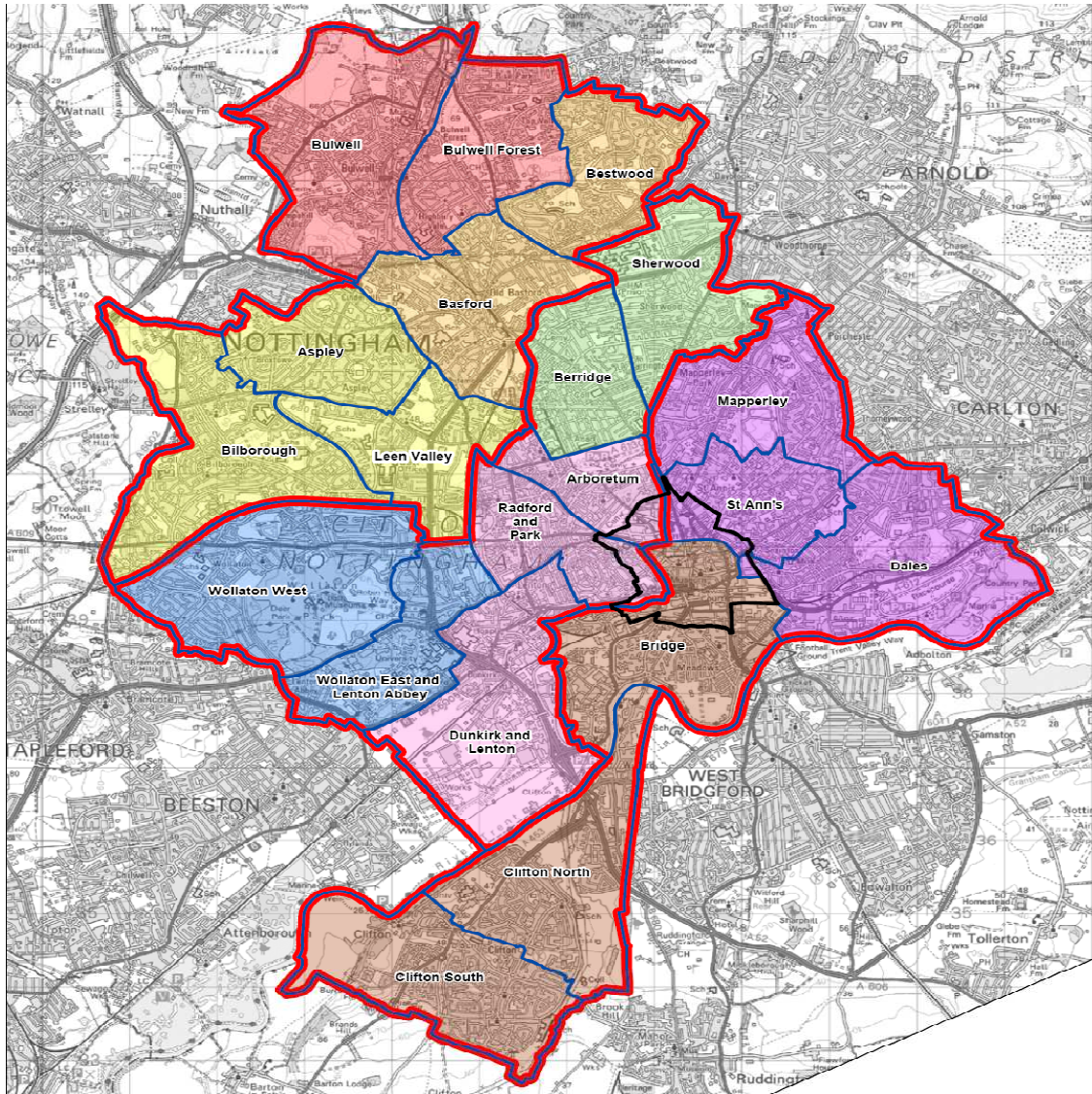
Crime data and ASB calls have been extracted from the Police systems and mapped to ascertain which Ward they occurred in.

Where a ward boundary overlaps with the City Centre, crime data and ASB calls relating to the City Centre have been removed.

Where possible the most recent data is used, although for some areas this may be a month further in arrears.

Discussions continue with other agencies regarding what further data can be included.

This page is intentionally left blank



Radford and Park

Area Committee Report

Unofficial December 2013 Data

Ward Priorities 2014

Theme	Priorities	Key Actions	Outcome	Lead
Safer	Reduce ASB in neighbourhoods and continue to build confidence and trust	Visible presence across Beat areas. Operation Graduate - January / February 2014 to coincide with student return Weeks of Action / Student Weeks of Action	Increased levels of reporting, reduced levels of crime and ASB and reducing fear of crime / perceptions of crime	Police, Community Protection, Universities
	Reduce street drinking – St Peter's. Promote Designated Public Places Order (DPPO)	Develop St Peter's Action plan to include continued monitoring of Soup Kitchen project and impact locally.	Improved confidence and support towards local agencies	Police, community Protection
Neighbourhoods	Managing waste, flytipping sites, overflowing and contaminated bins	Targetted work around grot spots	Improved levels of cleanliness, partnership approach to problem solving	City Services
	Managing redevelopment sites / derelict buildings	Ongoing regeneration plans around key sites – NCH highrise replacements, Forest Mills, Radford Mills, Sandfields site	Neighbourhood transformation	NCH, City Services, Wates Living UK Regeneration

Ward Priorities 2014

Theme	Priorities	Key Actions	Outcome	Lead
Families	Continue to strengthen offer for children and young people	Sustain Radford Girls Football and Radford Youth Group, Identify new venues for older youth	Families will be healthier, fitter and emotionally resilient with an enjoyable and safe place for children to grow up	Police / Nottingham Forest FC / Children and Families
Health	Increase affordable opportunities at John Carroll Leisure Centre	Resurfacing astro turf Swimming sessions	Increased local take up	Sports and Leisure
Working	Increase in training and employment opportunities including apprenticeships	Support to residents who need help in accessing job search, training courses and CV writing	2 years of funding secured for unemployed 18-24 year olds to access training and jobs in the area through the Youth contract. Delivery model and partners being developed. In discussion with Castle Cavendish about employment priorities for 2014/15 funding	Employment and Skills Team / Economic Development Castle Cavendish

Community Engagement

Ward Walks

Area/Estate	Date/Time	Meeting Point
Radford West (meet Garfield Court residents)	13 February 2014 (2.30pm)	Hartley Road / Addington Street
Leen	13 March 2014 (2.30pm)	Hartley Road / Forster Street
Park	10 April 2014 (2.30pm)	Tunnel entrance
Lenton Triangle	8 May 2014 (2.30pm)	Derby Road / Kimbolton Avenue

Community Meetings

Group	Date	Venue
Radford and Leen Tenants and Residents Association	18 February (6.45pm) 18 March, 15 April	St Peter's Church, Hartley Road / Churchfield Lane, Radford
BRAMTRA (Bramcote Estate Tenants Group)	13 March (6.00pm)	Community Room, Affinity Sutton Housing Centre, Redoubt Street
Radford West Residents Group	11 February, 11 March, 8 April	Pine View Community Room (Ground Floor), The Woodlands, Radford
Lenton Triangle Residents Forum	To be confirmed	PRIMARY, 33 Seely Road,

Community Engagement

Events Delivered

Event	Lead Partners	Date/Time	Venue
Radford/ Lenton Library garden project	Dunkirk and Lenton Partnership, volunteers, City Services	21 November 10.30am	Radford / Lenton Library, Lenton Boulevard
Christmas Lights switch on – Canning Circus	Area 4 Councillors, schools, City Services	Thursday 21 November 3.30pm – 5.30pm	Canning Circus
Consultation – Alfreton Road shops (behind Clifford Street)	NCH, City Services	28 November 1.00pm – 3.00pm	Alfreton Road / Clifford Street
BRAMTRA Christmas event	NCH	Tuesday 17 December 6.00pm – 9.00pm	Sutton Housing, Redoubt Street

Future Events and Activities Planned

Event	Lead Partners	Date/Time	Venue
Sikh Community / health event	Sikh temple, Norton Street / Decade of Better Health	Saturday 12 April (time tbc)	Sikh temple, Norton Street / John Carroll Leisure Centre
Week of Action	City Services plus Neighbourhood Action Team Partners	5 – 9 May 2014	Across Ward

Finance

Ward Councillor Budgets:

Total Amount allocated this period £4,860

Budget Remaining Unallocated £18,084

Area Capital Fund 2013/15:

Total Amount allocated this period £50,000

Budget Remaining Unallocated £106,001 (inclusive of 2013-14 allocation)

Other funding:

NCH: Environment Budget 2013/14 £49,511

Section 106 / other: to be confirmed

Ward Summary

Crime data is shown below for both the current month compared to last year and the year to date.

Ward	Type	Dec-12	Dec-13	Volume +/-	% Change	YTD 12-13	YTD 13-14	Volume +/-	% Change
RADFORD & PARK	Autocrime	28	25	-3	-11%	223	160	-63	-28%
	Burglary	33	8	-25	-76%	120	126	6	5%
	Burglary Other	3	5	2	67%	33	63	30	91%
	Damage	15	6	-9	-60%	140	108	-32	-23%
	Drugs	11	4	-7	-64%	51	68	17	33%
	Fraud	3		-3	-100%	9		-9	-100%
	Other	1	4	3	300%	21	29	8	38%
	Personal Robbery	6	4	-2	-33%	25	37	12	48%
	Robbery Business	1		-1	-100%	3	1	-2	-67%
	Sexual	2	1	-1	-50%	16	15	-1	-6%
	Theft	33	44	11	33%	289	344	55	19%
	Threats	3	1	-2	-67%	26	23	-3	-12%
	Violence	20	25	5	25%	161	176	15	9%
	RADFORD & PARK Total		159	127	-32	-20%	1117	1150	33
ASB		45	42	-3	-7%	605	682	77	13%

Page 75

The summary below shows only year to date figures, and in the case of public realm and fire data, will generally be a month in arrears.

Type	YTD 12-13	YTD 13-14	Volume +/-	% Change
Domestic Violence Crime	65	79	14	22%
Night Time Economy Violence	6	6	0	0%
Hate Crime	12	20	8	67%
Deliberate Fires	24	14	-10	-42%
Cleanliness (Average Score)	87	87	0	0%
Graffiti	95	152	57	60%
Fly-Tipping	373	790	417	112%

Priorities & Targets

The Central Locality has targets to reduce Dwelling Burglary, Shop Theft and Violence. The Locality's performance against Targets is set out below. This shows that the target is being met for Dwelling Burglary, but not for Shop Theft or Violent Crime.

Locality Target Summary																
Locality	Crime Type	Apr-13	May-13	Jun-13	Jul-13	Aug-13	Sep-13	Oct-13	Nov-13	Dec-13	Jan-14	Feb-14	Mar-14	YTD	Proposed year end Position	+/- Target Position
Central	Dwelling Burglary	96	77	71	65	56	59	55	79	69	75	75	75	627	890	-38
	Shop Theft	88	71	96	55	54	27	54	52	57	40	40	40	554	644	30
	Violence	96	114	115	130	130	110	145	109	113	84	84	84	1062	1173	141

Ward Performance

The table below shows how Radford & Park is performing year to date for All Crime and ASB in comparison to the other wards on the Division. High Impact wards are highlighted in blue.

Radford & Park is seeing only a slight increase in All Crime but a relatively high increase in ASB.

Dec 2013		All Crime				ASB			
Locality	Ward	YTD 12/13	YTD 13/14	Change	% Change	YTD 12/13	YTD13/14	Change	% Change
Central	ARBORETUM	968	1109	141	14.6%	712	757	45	6.3%
	BERRIDGE	1149	1171	22	1.9%	821	737	-84	-10.2%
	DUNKIRK & LENTON	807	744	-63	-7.8%	348	273	-75	-21.6%
	RADFORD & PARK	1119	1150	31	2.8%	605	682	77	12.7%
	SHERWOOD	780	985	205	26.3%	351	388	37	10.5%
	WOLLATON EAST & LENTON ABBEY	330	354	24	7.3%	110	117	7	6.4%
	WOLLATON WEST	377	430	53	14.1%	140	138	-2	-1.4%
Central Total		5530	5943	413	7.5%	3087	3092	5	0.2%
City	CITY CENTRE	6138	5638	-500	-8.1%	2160	1872	-288	-13.3%
North	ASPLEY	1326	1194	-132	-10.0%	755	704	-51	-6.8%
	BASFORD	903	940	37	4.1%	542	511	-31	-5.7%
	BESTWOOD	734	808	74	10.1%	491	643	152	31.0%
	BILBOROUGH	968	956	-12	-1.2%	615	611	-4	-0.7%
	BULWELL	1438	1428	-10	-0.7%	919	822	-97	-10.6%
	BULWELL FOREST	689	735	46	6.7%	345	403	58	16.8%
	LEEN VALLEY	547	583	36	6.6%	304	309	5	1.6%
North Total		6605	6644	39	0.6%	3971	4003	32	0.8%
South	BRIDGE	763	648	-115	-15.1%	441	414	-27	-6.1%
	CLIFTON NORTH	527	545	18	3.4%	296	313	17	5.7%
	CLIFTON SOUTH	747	578	-169	-22.6%	458	454	-4	-0.9%
	DALES	790	877	87	11.0%	529	613	84	15.9%
	MAPPERLEY	837	901	64	7.6%	467	448	-19	-4.1%
	ST ANNS	847	941	94	11.1%	822	801	-21	-2.6%
South Total		4511	4490	-21	-0.5%	3013	3043	30	1.0%
Division		22784	22715	-69	-0.3%	12231	12010	-221	-1.8%
Previous Month's Performance					1.0%				-2.8%

Exception Reporting

Dwelling Burglary

Dwelling Burglary is showing a considerable reduction compared to the same month last year, but is still showing an increase for the year to date.

Theft

Theft is the main volume crime category on this ward, accounting for 35% of All Crime on the ward in December. The theft category is also showing an increase this month compared to last year and for the year to date. The table below shows the individual crime categories within this group on a month basis. This shows that Shop Theft is generally the highest category but there was an equal amount of Theft Other during December. Also shown on the table is the percentage of offences where mobile phones are targeted. The percentage rose in December. The shop theft offences were spread across Lidl, Aldi, B & M and Maplin. The Theft Other offences were quite wide spread and involved theft of phones, purses and money from purses.

Offence	Apr	May	Jun	Jul	Aug	Sep	Oct	Nov	Dec	Total
THEFT FROM SHOP	31	21	22	20	16	6	14	12	18	160
THEFT OTHER	6	8	10	11	8	7	11	3	18	82
THEFT OR UNAUTHORISED TAKING OF PEDAL CYCLE	4	7	3	8	5		7	10	5	49
THEFT IN DWELLING OTHER THAN AUTO MACHINE OR METER	4	1	9	5	5	2	2	3	1	32
THEFT FROM PERSON	4	3	1	3	2			2	2	17
THEFT FROM AUTO MACHINE OR METER					1		2			3
THEFT BY EMPLOYEE							1			1
Total	49	40	45	47	37	15	37	30	44	344
% Mobile Phone Theft	6%	13%	9%	13%	16%	20%	14%	7%	20%	13%

Exception Reporting (continued)

Violence

Violence has seen an increase both for the month and year to date. 44% of the offences were domestic related during December and the same proportion applies for the year to date.

All Crime

Radford & Park has only a slightly higher than average crime rate for All Crime but ranks high in respect of Autocrime and Dwelling Burglary. A full breakdown can be found on page 7. ASB levels however are below average, as shown on page 8.

Crime Figures

Crime Types by Rate (per 1000 of population) of the 20 Wards – Figures are Year to Date 2013/14

WARD	ALL CRIME	AUTOCRIME	BURGLARY	DAMAGE	PERSONAL ROBBERY	THEFT	VIOLENCE
ARBORETUM	99.06	5.74	9.60	12.56	5.47	15.52	24.85
ASPLEY	67.76	5.96	5.45	11.80	0.91	10.55	17.25
BASFORD	57.44	7.10	5.43	9.87	1.23	10.43	13.39
BERRIDGE	62.46	7.24	5.84	9.17	1.07	14.21	12.49
BESTWOOD	48.23	3.46	5.19	9.91	1.07	6.21	11.58
BILBOROUGH	56.87	6.73	5.36	10.24	0.95	8.99	12.68
BRIDGE	64.90	3.59	1.64	8.31	1.23	26.04	11.69
BULWELL	88.38	5.69	5.08	18.51	1.92	21.97	17.21
BULWELL FOREST	53.84	3.53	4.04	10.06	1.47	14.25	10.65
CLIFTON NORTH	41.43	3.03	4.11	8.69	1.16	5.66	8.46
CLIFTON SOUTH	41.44	2.51	5.31	7.10	0.86	7.31	10.76
DALES	53.28	4.56	2.73	10.08	0.49	11.36	11.54
DUNKIRK AND LENTON	67.95	10.26	6.68	6.41	0.73	21.43	9.43
LEEN VALLEY	54.48	4.58	5.61	8.78	1.68	11.12	10.00
MAPPERLEY	56.42	7.64	4.48	7.83	0.57	10.73	10.67
RADFORD AND PARK	58.59	8.17	6.43	5.41	1.89	16.69	8.93
SHERWOOD	62.09	5.64	5.97	6.49	1.82	21.41	11.16
ST ANNS	66.80	4.65	3.79	12.10	3.79	7.30	18.61
WOLLATON EAST AND LENTON ABBEY	35.57	3.11	5.73	3.62	0.30	12.86	3.52
WOLLATON WEST	29.03	4.75	4.14	3.39	0.27	7.67	2.85
WARD AVERAGE	58.30	5.40	5.13	9.02	1.44	13.09	11.89

All ASB Figures

All ASB by Rate (per 1000 of population) of the 20 Wards)

WARD	RATE (PER 1000 OF POP.) Dec 2013
ARBORETUM	6.82
ASPLEY	3.40
BASFORD	3.64
BERRIDGE	2.36
BESTWOOD	3.64
BILBOROUGH	3.22
BRIDGE	3.08
BULWELL	3.65
BULWELL FOREST	2.79
CLIFTON NORTH	2.25
CLIFTON SOUTH	2.01
DALES	3.95
DUNKIRK & LENTON	1.47
LEEN VALLEY	3.92
MAPPERLEY	2.02
RADFORD & PARK	2.14
SHERWOOD	1.62
ST ANNS	5.23
WOLLATON EAST & LENTON ABBEY	0.80
WOLLATON WEST	0.47
WARD AVERAGE	2.92

Fire

Table: Volume of Deliberate Primary and Secondary Fires by Ward

Fire Data									
Locality	Ward	Nov-12	Nov-13	Volume +/-	% Change	Ytd 12-13	Ytd 13-14	Volume +/-	% Change
Central	Arboretum	2	0	-2	-100%	13	18	5	38%
	Berridge	7	3	-4	-57%	35	29	-6	-17%
	Dunkirk and Lenton	1	2	1	100%	5	7	2	40%
	Radford and Park	1	1	0	0%	24	14	-10	-42%
	Sherwood	0	3	3	29900%	9	15	6	67%
	Wollaton East and Lenton Abbey	0	0	0	-100%	6	6	0	0%
	Wollaton West	0	0	0	-100%	2	3	1	50%
Central Locality		11	9	-2	-18%	94	92	-2	-2%
North	Aspley	1	0	-1	-100%	45	34	-11	-24%
	Basford	4	2	-2	-50%	40	26	-14	-35%
	Bestwood	5	0	-5	-100%	31	37	6	19%
	Bilborough	3	2	-1	-33%	34	19	-15	-44%
	Bulwell	6	7	1	17%	60	56	-4	-7%
	Bulwell Forest	0	1	1	9900%	28	12	-16	-57%
	Leen Valley	3	2	-1	-33%	20	20	0	0%
North Locality		22	14	-8	-36%	258	204	-54	-21%
South	Bridge	0	2	2	19900%	10	14	4	40%
	Clifton North	1	2	1	100%	10	9	-1	-10%
	Clifton South	2	1	-1	-50%	17	25	8	47%
	Dales	1	1	0	0%	6	13	7	117%
	Mapperley	2	0	-2	-100%	14	10	-4	-29%
	St. Anns	2	1	-1	-50%	22	23	1	5%
South Locality		8	7	-1	-13%	79	94	15	19%
Division		41	30	-11	-27%	431	390	-41	-10%

Note: Where ward boundaries overlap with the City Centre fires that occurred in the City Centre have been **included** in the ward figures.

Community Protection

Data has been received from Community Protection and where postcodes have been listed these have been geo-coded and mapped to determine the Ward. All addresses relate to the address of the Perpetrator.

FPNs are not currently available at ward level.

In December 2013 the following orders were issued:

- **5 Statutory Notices for the Environment**
- **1 Outright Possession Order (Eviction) for ASB**

For enquiries regarding Community Protection court outcomes please contact the Operational Manager for the locality.

Cleanliness Index

Cleanliness Index
Score

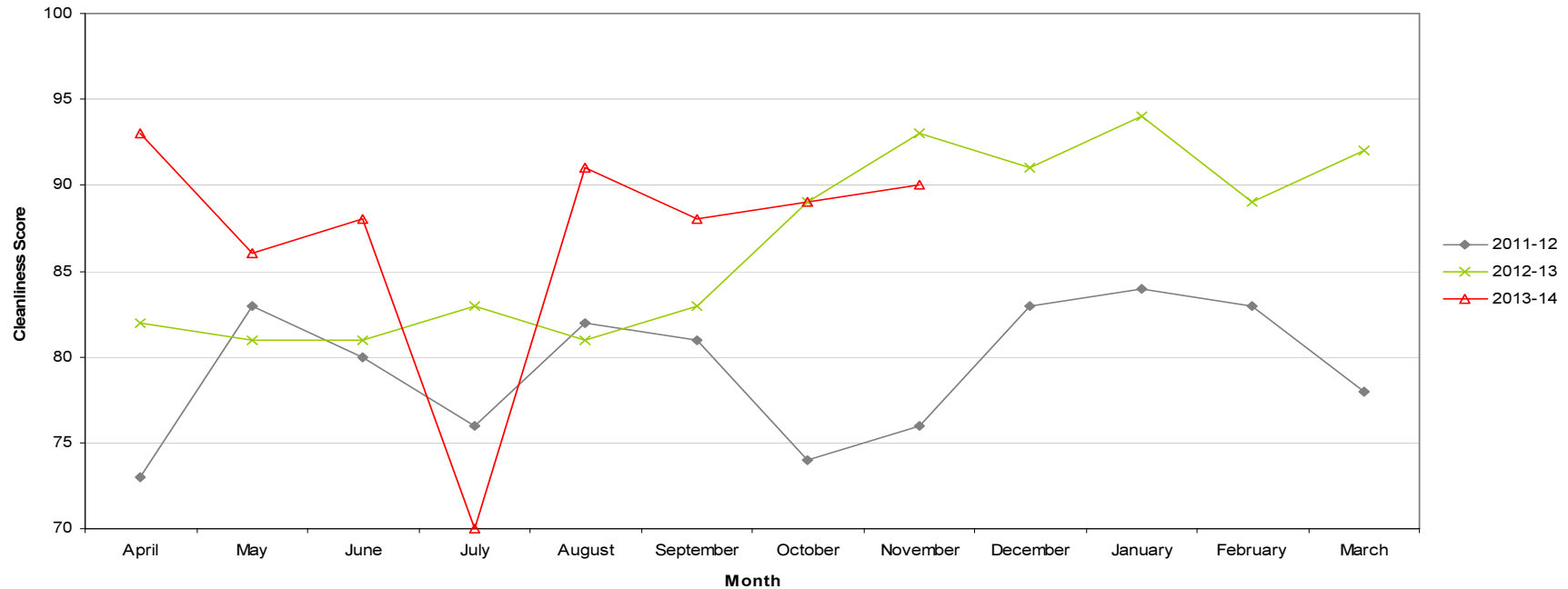
90

Performance compared to
previous year

Performance compared to
neighbourhoods target
of 86

- All data refers to a comparison with the previous year's month
- It is proposed that performance over time graphs be used for each indicator
- Historic data for comparison is not available for dog fouling

Cleanliness Index - Radford & Park

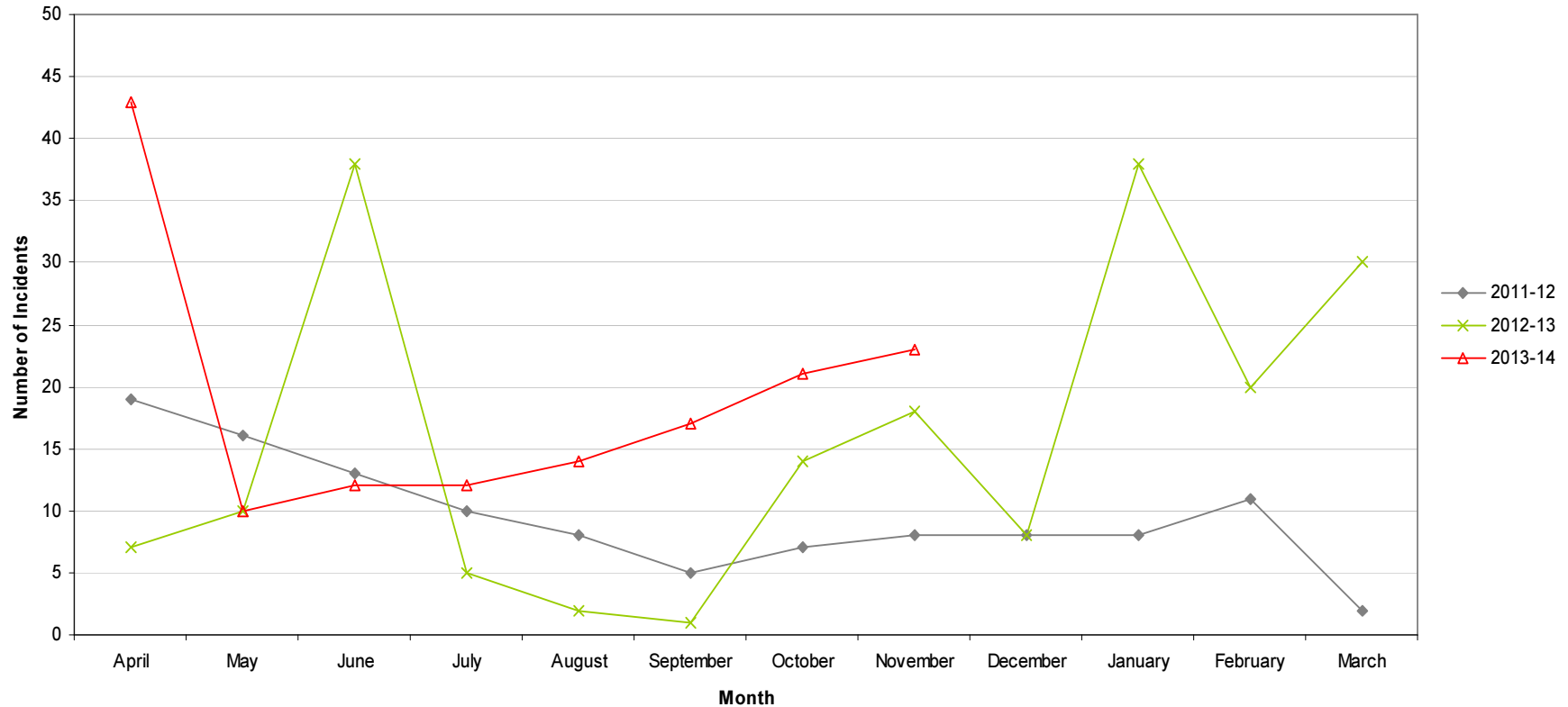


Graffiti Reports

RED	23 incidents	Increase of 5
AMBER		
GREEN		

- All data refers to a comparison with the previous year's month
- It is proposed that performance over time graphs be used for each indicator
- Historic data for comparison is not available for dog fouling

Incidents of Graffiti - Radford & Park

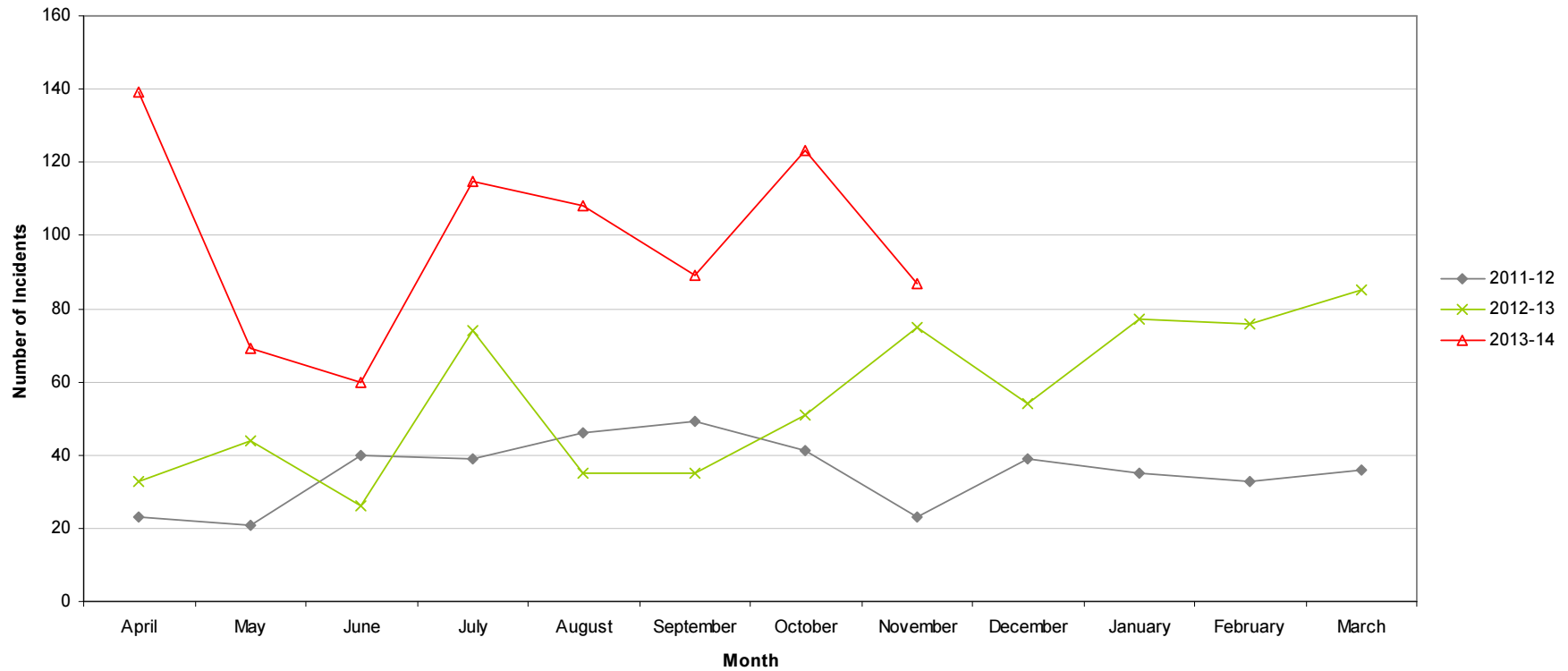


Fly Tipping

RED	87 incidents	Increase of 12
AMBER		
GREEN		

- All data refers to a comparison with the previous year's month
- It is proposed that performance over time graphs be used for each indicator
- Historic data for comparison is not available for dog fouling

Incidents of Fly Tipping - Radford & Park



Housing

Ward Report - Radford & Park
Generated on: 18 December 2013



Anti-social behaviour

Performance indicator and definition	Target	2013/14			2012/13	2011/12
		Value	Status	Long Trend	Value	Value
% of ASB cases resolved by first intervention – Central region <i>Note: This PI monitors how many ASB cases NCH resolved on the first intervention e.g. written warning. Data for this indicator is not available by ward and is reported by Housing Office.</i>	76%	84.55%			78.92%	
% of ASB cases resolved – Central region <i>Note: This PI measures the proportion of ASB cases NCH has successfully resolved. Data for this PI is not available by ward and is reported by Housing Office.</i>	97.8%	100%			100%	97.53%
Number of new ASB cases – Central region <i>Note: Data for this PI is only available by Housing Office.</i>		104			144	229
Tenant satisfaction with the ASB service - Central region <i>Note: Data for this PI is only available by Housing Office.</i>	8	7.48			6.95	6

Housing

Repairs







Performance indicator and definition	Target	2013/14			2012/13	2011/12
		Value	Status	Long Trend	Value	Value
% of repairs completed in target – Radford & Park Ward <i>Note: This PI monitors the proportion of repairs being completed within agreed timescales.</i>	96%	98.01%			94.87%	96.59%
Tenant satisfaction with the repairs service <i>Note: Data for this PI is only available citywide</i>	8.8	8.69			8.64	8.65

Rent Collection



Performance indicator and definition	Target	2013/14			2012/13	2011/12
		Value	Status	Long Trend	Value	Value
% of rent collected – Central region <i>Note: This PI measures the amount of rent collected (including tenant arrears) as a percentage of rent due for the current year. Data for this indicator is not available by ward and is reported by Housing Office.</i> <i>Trend shows as improving if value is over 100% as arrears are decreasing.</i>	8.3%	99%			100.5%	100.6%
% of tenancies ending due to eviction <i>Note: This PI monitors the percentage of tenants being evicted due to rent arrears and is reported citywide.</i>	0.75%	0.69%			0.55%	0.61%

Housing

Empty properties

Performance indicator and definition	Target	2013/14			2012/13	2011/12
		Value	Status	Long Trend	Value	Value
Average void re-let time (calendar days) – Radford & Park Ward <i>Note: This PI measures how long it takes NCH to re-let empty properties from the end of the old tenancy to the start of the new tenancy.</i>	25	16.74			29.62	23.81
Number of empty properties awaiting decommission – Radford & Park ward <i>Note: This PI shows the number of empty properties which will not be re-let and includes those being decommissioned and / or demolished.</i>					54	112
Number of lettable voids – Radford & Park Ward <i>Note: Lettable voids are empty properties available for re-letting. They will receive repair work and then be re-let to a new tenant.</i>		12			19	7

Tenancy sustainment

Performance indicator and definition	Target	2013/14			2012/13	2011/12
		Value	Status	Long Trend	Value	Value
Percentage of new tenancies sustained - Radford & Park Ward (2003) <i>Note: This PI measures the number of new tenants who are still in their tenancy 12 months later.</i>	93.5%	93.18%			94.19%	

Housing

Key:



Performance on or exceeding target



Performance below target



Data only performance indicator



Performance has improved compared to two years ago



Performance has deteriorated compared to two years ago



Performance unchanged

Data prepared by Nottingham City Homes Performance Team

For more information please contact Jonathan Hurst, Performance Data Officer on 0115 9157368 or Marcus Parton, Performance Analyst on 0115 915715

Methodology

Data has not been audited or verified and therefore must only be used as a reflection of crime.

Crime data and ASB calls have been extracted from the Police systems and mapped to ascertain which Ward they occurred in.

Where a ward boundary overlaps with the City Centre, crime data and ASB calls relating to the City Centre have been removed.

Where possible the most recent data is used, although for some areas this may be a month further in arrears.

Discussions continue with other agencies regarding what further data can be included.

This page is intentionally left blank

ARBORETUM, DUNKIRK AND LENTON, RADFORD AND PARK AREA COMMITTEE
19 FEBRUARY 2014

Title of paper:	Environmental Submissions from Nottingham City Homes (NCH)	
Director(s)/ Corporate Director(s):	Nick Murphy, Chief Executive, Nottingham City Homes	Wards affected: Arboretum, Dunkirk and Lenton, Radford and Park
Report author(s) and contact details:	Paul Howard, Tenancy and Estate Manager, Nottingham City Homes Tel: 0115 8838232 Paul.howard@nottinghamcityhomes.org.uk	
Other colleagues who have provided input:	Housing Patch Managers: Bal Rathore, Rukky Ahmed, Maureen Birkin	
Date of consultation with Portfolio Holder(s) (if relevant)	N/A	
Relevant Council Plan Strategic Priority:		
Cutting unemployment by a quarter		<input type="checkbox"/>
Cut crime and anti-social behaviour		<input checked="" type="checkbox"/>
Ensure more school leavers get a job, training or further education than any other City		<input type="checkbox"/>
Your neighbourhood as clean as the City Centre		<input type="checkbox"/>
Help keep your energy bills down		<input type="checkbox"/>
Good access to public transport		<input type="checkbox"/>
Nottingham has a good mix of housing		<input type="checkbox"/>
Nottingham is a good place to do business, invest and create jobs		<input type="checkbox"/>
Nottingham offers a wide range of leisure activities, parks and sporting events		<input type="checkbox"/>
Support early intervention activities		<input type="checkbox"/>
Deliver effective, value for money services to our citizens		<input checked="" type="checkbox"/>
Summary of issues (including benefits to citizens/service users):		
This report informs the Committee of the schemes initially requested by residents of NCH properties, and residents living within the environment of NCH properties, to provide extra security, safety and well being to the residents of Arboretum, Dunkirk and Lenton, and Radford and Park wards. Schemes approved by the Committee will be funded from the Housing Revenue Fund.		
Recommendation(s):		
1	To consider the schemes listed in Appendix 1, and decide which schemes to approve.	

1. REASONS FOR RECOMMENDATIONS

- 1.1 Suggestions for schemes may be from a number of sources including tenants and leaseholders, tenants and residents groups, Ward Councillors, Local Area Group meetings, Ward Walks, Area 4 Panel, Housing Patch Managers and Neighbourhood Development Officers.

2. BACKGROUND (INCLUDING OUTCOMES OF CONSULTATION)

- 2.1 A sum of £26,442.59 for the Arboretum Ward, £24,797.04 for the Dunkirk and Lenton Ward and £60,134.47 for the Radford and Park Ward remains for the housing environmental improvements for 2013/2014. These figures include any carry over figures from last year.

- 2.2 The proposed schemes must fit at least one of the following criteria:

- improvement of security for tenants and leaseholders (e.g. door entry, lighting, fencing, garage sites);
- improvement of the environment for tenants and leaseholders (e.g. dealing with graffiti, reducing anti-social behaviour, parking issues, drying areas, resurfacing).;
- improvement of spaces for tenants and leaseholders (e.g. installation of community facilities, or areas on land under NCH management).

3. OTHER OPTIONS CONSIDERED IN MAKING RECOMMENDATIONS

- 3.1 A number of schemes have been submitted but, if the available Housing Environmental Funding, does not cover all of the proposals, those remaining can be submitted to the Committee for consideration in 2013/2014 if further funding is made available. Any surplus left over in the respective budgets should carry over into the next financial year and can be used to fund future schemes.

4. FINANCIAL IMPLICATIONS (INCLUDING VALUE FOR MONEY/VAT)

- 4.1 NCH has provided quotations for the proposed works via an agreed competitive tendering process.
- 4.2 Once a City wide programme is agreed, works will be carried out by approved contractors. It is anticipated that further savings may be found and that more schemes may be completed as a result of these savings.

5. RISK MANAGEMENT ISSUES (INCLUDING LEGAL IMPLICATIONS AND CRIME AND DISORDER ACT IMPLICATIONS)

- 5.1 To ensure local development in decision-making the Area Panel and Local Area Groups have been actively involved in the process. Local tenant and resident groups have also been consulted, along with local Ward Councillors.
- 5.2 The Housing Environment Fund will enable a series of improvements to take place that will improve security, spaces and the environment for local people.
- 5.3 The funds available are limited and are targeted at the most vulnerable tenants in the area within the criteria set out at section 2.2 of this report.

6. EQUALITY IMPACT ASSESSMENT

- 6.1 As this report does not include proposals for new or changing policies, or services an Equality Impact Assessment has not been carried out. However, these proposals aim to improve the quality of life and wellbeing for residents.

7. LIST OF BACKGROUND PAPERS OTHER THAN PUBLISHED WORKS OR THOSE DISCLOSING CONFIDENTIAL OR EXEMPT INFORMATION

- 7.1 None.

8. PUBLISHED DOCUMENTS REFERRED TO IN COMPILING THIS REPORT

- 8.1 None.

ENVIRONMENTAL PROGRAMME 2013/2014 - PROPOSED SCHEMESARBORETUM WARD

Site	Proposal	Assessment	Proposed Decision	Budget £26,442.59
17-21 Vincent Gardens, Hyson Green	Take down knee rail fencing, remove bushes and tree to plot outside properties and create new footpath through area	Will improve the environmental appearance for residents	Agree	£2,265.98
Lambert Street, The Avenue Hotel rear boundary	Take down existing crumbling wall and replace along rear boundary; s/fit 6 foot metal fence above	Area is health and safety risk and will improve security for local residents as well	Agree	£15,310.95
Rear of Selhurst Court, Hyson Green	Remove old paving slabs and replace with tarmac	Improve the local environment and reduce risks for local residents	Agree	£5,610.18
			Total (carry forward)	£3,255.48

RADFORD AND PARK WARD

Site	Proposal	Assessment	Proposed Decision	Budget £60,134.47
Woodgate Court, Canning Circus	Resurface the drying areas to 1-6, 7-12, 13-21	Drying areas are unsightly and surfaces are a health and safety risk; improve environmental appearance	Agree	£10,623.79
Grafton Court, Canning Circus	Remove cobbles and tarmac entrances to following blocks: 1-6;7-13;14-19;20-25;26-31;32-41;42-49	Cobbles unsafe and appearance of area will be improved	Agree	£4,265.24
			Total (carry Forward)	£45,245.44

DUNKIRK AND LENTON WARD

Site	Proposal	Assessment	Proposed Decision	Budget £24,797.04
Penn Avenue 34-48, Lenton	Resurface footpath with red tarmac to match existing and fill in empty tree border surrounds	Improved environmental appearance and reduce health and safety risk to residents	Agree	£5,524.24
Penn Avenue, Lenton	Install blue plaque to front centre of middle block at Penn Avenue	Historic marker to improve environmental appearance of block	Agree	£432.50
Maxwell Close, Lenton	Raise dropped kerb to bottom of Maxwell Close – joint project with Highways	Area currently being used as unauthorised turning circle; improvement of environment	Agree	£1,375.00
Penn Avenue, Lenton	Move the existing Palisade fencing back to the perimeter near Sherwin Grove. Clear the area- work to be completed once private landlord has reinstated their boundary	improve the appearance of estate for local residents	Agree	£2,331.90
			Total (carry forward)	£15,133.40

**ARBORETUM, DUNKIRK AND LENTON, RADFORD AND PARK AREA COMMITTEE-
19 FEBRUARY 2014**

Title of paper:	AREA CAPITAL FUND – 2013/15 PROGRAMME	
Director(s)/ Corporate Director(s):	Andy Vaughan Director of Neighbourhood Services	Wards affected: Arboretum Dunkirk and Lenton Radford and Park
Report author(s) and contact details:	John Marsh, Central Locality Manager john.marsh@nottinghamcity.gov.uk Tel: 0115 8838467 Rob Gabbitas, Neighbourhood Development Officer rob.gabbitas@nottinghamcity.gov.uk Tel: 0115 8838472 Iffat Iqbal, Neighbourhood Development Officer iffat.iqbal@nottinghamcity.gov.uk Tel: 07985221347 Linda Wright, Neighbourhood Development Officer linda.wright@nottinghamcity.gov.uk Tel: 0115 8838473	
Other colleagues who have provided input:	Nancy Hudson, Projects Officer, Highways Services nancy.hudson@nottinghamcity.gov.uk Tel: 0115 8765633	
Date of consultation with Portfolio Holder(s) (if relevant)	N/A	
Relevant Council Plan Strategic Priority:		
Cutting unemployment by a quarter		<input type="checkbox"/>
Cut crime and anti-social behaviour		<input checked="" type="checkbox"/>
Ensure more school leavers get a job, training or further education than any other City		<input type="checkbox"/>
Your neighbourhood as clean as the City Centre		<input checked="" type="checkbox"/>
Help keep your energy bills down		<input type="checkbox"/>
Good access to public transport		<input type="checkbox"/>
Nottingham has a good mix of housing		<input type="checkbox"/>
Nottingham is a good place to do business, invest and create jobs		<input type="checkbox"/>
Nottingham offers a wide range of leisure activities, parks and sporting events		<input checked="" type="checkbox"/>
Support early intervention activities		<input type="checkbox"/>
Deliver effective, value for money services to our citizens		<input checked="" type="checkbox"/>
Summary of issues (including benefits to citizens/service users):		
This report details the latest allocation for the Local Transport Plan (LTP) element under the Area Capital Fund for highways and footways. It also highlights schemes which have recently been prioritised by Ward Councillors for approval by the Area Committee in accordance with the City Council's Constitution.		
Recommendation(s):		
1	To note the monies available to Arboretum, Dunkirk and Lenton and Radford and Park Wards, as outlined in Appendix 1.	
2	To approve new schemes prioritised by Ward Councillors since the last Area Committee meeting, as detailed in Appendix 1 (shown as non shaded).	

1. REASONS FOR RECOMMENDATIONS

- 1.1 The Nottingham LTP 2011-2026 maintains a commitment to deliver local transport improvements across Nottingham's neighbourhoods and prioritises small scale transport improvements of importance to local communities.
- 1.2 As part of the budget process Nottingham City Council has approved an LTP capital allocation of £2.5 million citywide for 2013 - 2015.
- 1.3 This process provides an opportunity for the Area Committee to make comment on suggested schemes and their progress.
- 1.4 Area Capital Fund schemes, including the LTP element, have been identified through various methods including consultation, citizen feedback via Councillors Casework and partnership working. Discussions on potential schemes take place at monthly Neighbourhood Action Teams (NAT) meetings, regular briefings with Ward Councillors and monthly ward walks across neighbourhood police beats.

2. BACKGROUND (INCLUDING OUTCOMES OF CONSULTATION)

- 2.1 The Area Capital Programme was established to improve the environment of the neighbourhoods and to create a sense of place for residents in order to improve the quality of life of local people. Since it was established in 2006 to meet the then corporate priority of "Transforming Neighbourhoods", the Area Capital Fund has included a total programme expenditure portfolio of £40 million. The improvements that have been carried out to date using this programme have included footpaths, fences, visual enhancements to public realm, refurbishment of parks and improvements to public buildings.
- 2.2 Resources are allocated from the Nottingham City Council General Fund, the LTP and the Housing Revenue Account (HRA). To achieve a joint approach to environmental improvements in neighbourhoods, a greater degree of flexibility has been established to prioritise and deliver improvements so that there is a synergy in local solutions for local issues across neighbourhoods.
- 2.3 The programme of works is a rolling programme. There have been instances where schemes are started, with strong community involvement and interest, only to be altered at a later stage due to changing circumstances, such as economic conditions and changes in land values.
- 2.4 The Area Committee are invited to comment specifically on those schemes identified in the proposals column and also to consider whether certain schemes can be linked to other programmes of work in order to generate best value and create a greater impact on the local area.

3. OTHER OPTIONS CONSIDERED IN MAKING RECOMMENDATIONS

- 3.1 None

4. FINANCIAL IMPLICATIONS (INCLUDING VALUE FOR MONEY/VAT)

- 4.1 Bringing together the various strands which form part of the Area Capital Programme enables the City Council to respond efficiently in delivering on public realm improvements as identified by local people.

5. RISK MANAGEMENT ISSUES (INCLUDING LEGAL IMPLICATIONS AND CRIME AND DISORDER ACT IMPLICATIONS)

5.1 A Risk Register has been produced and is monitored regularly.

6. EQUALITY IMPACT ASSESSMENT

6.1 Not needed.

7. LIST OF BACKGROUND PAPERS OTHER THAN PUBLISHED WORKS OR THOSE DISCLOSING CONFIDENTIAL OR EXEMPT INFORMATION

7.1 Highways Framework Agreement.

8. PUBLISHED DOCUMENTS REFERRED TO IN COMPILING THIS REPORT

8.1 None

Arboretum Area Capital 2013 - 2015 Programme

Arboretum LTP schemes

Location	Type	Councillor Prioritised / Area Committee Approved	Estimate	Estimated start date	Completed	Details
Belper Road	Footpath	Approved November 2013	£2,208		Yes	Full resurface of footpath adjacent to LIGA - one side only
Patterson Street	Footpath	Approved November 2013	£2,414		Yes	Full resurface of footpath opposite "Amelia" - one side only
Claypole Road	Carriageway	Approved November 2013	£19,212			Full resurface of carriageway from Radford Road to Maple Street
Radford Road	Lining	Approved September 2013	£5,000			Lining on Radford Road, to included St Pauls Ave and Pleasant Row
Court St / Dalkeith Terrace	Parking	Approved September 2013	£7,500			Parking restrictions on Court Street and Dalkeith Terrace
Belper Road	Parking improvements	Delegated Authority 12 July 2013	£8,584	--	Yes	Contribution to scheme to improve parking facilities on Belper Road
Maple Street	TRO	Delegated Authority 7 March 2013	£5,000			

Total LTP schemes *

£49,918

Arboretum Public Realm schemes

Location / Scheme	Type	Councillor Prioritised / Area Committee Approved	Estimate	Estimated start date	Completed	Details
Berridge Junior School	Signage	Prioritised 14 January 2014	£499			Contribution to supply and fitting of six anti-litter signs, designed by school children, around the school
Holland Street	Fencing	Prioritised 10 January 2014	£850			Additional fencing for Holland Street gating project
Maple Street Park	Fencing	Prioritised 10 January 2014	£1,600			Replacement fencing as part of area regeneration
Belper Road	Fencing	Delegated Authority October 2013	£3,655			Remove wall and install rails as part of works to regenerate Belper Road car parking area
Priority cleansing areas	Equipment	Approved November 2013	£708			Replacement cleansing equipment for use on Gregory Boulevard
Holland Street	Gating Order	Approved September 2013	£4,000			Gating order
Bridlington Street Park	Rat Bait Bins	Approved September 2013 by DA	£504			2 rat bait bins to be installed at Bridlington Street Park as agreed with Public Health Officers
The Forest	Contribution	Approved May 2013	£30,000			

Total Public Realm schemes**

£41,816

Arboretum Decommittments

Location	Type	Reason	Amount	Details
Previously decommitted schemes			£31,580	
Total Decommitted ***			£31,580	
2013-2015 LTP allocation			£132,000	
LTP carried forward from 2011-2013			£14,953	
2013 - 2014 Public Realm allocation			£39,600	
Public Realm carried forward			£2,260	
Total Available 2013 - 2015 ACF			£188,813	
<i>*Less LTP schemes</i>			-	£49,918
<i>**Less Public Realm schemes</i>			-	£41,816
<i>***Decommittted funds</i>			+	£31,580
Remaining available balance			£128,659	
LTP element remaining			£128,615	
Public Realm element remaining			£44	

Dunkirk and Lenton Area Capital 2013 - 2015 LTP schemes

Dunkirk and Lenton LTP schemes

Location	Type	Councillor Prioritised / Area Committee Approved	Estimate	Estimated start date	Completed	Details
Sainsbury's, Derby Road and Lenton Boulevard	Cycle stands	Approved November 2013	£2,000			Two cycle stands outside Sainsbury outlets as part of Citywide cycling improvement strategy

Total LTP schemes*

£2,000

Dunkirk and Lenton Public Realm schemes

Location	Type	Councillor Prioritised / Area Committee Approved	Estimate	Estimated start date	Completed	Details
Penn Avenue, Lenton	Play equipment	Approved November 2013	£3,741			Combination swing with metal post including surfacing and ground preparation works
Priority cleansing areas	Equipment	Approved November 2013	£708			To improve backlines on small streets and paths in leaf fall season. Also for use on Lenton Boulevard

Total Public Realm schemes*

£4,449

Dunkirk and Lenton Area Capital Decommittments

Location	Type	Reason	Amount	Details

Total Decommittment**

£0

2013-2015 LTP allocation

£82,000

LTP carried forward from 2011-2013

£0

2013 - 2014 Public Realm allocation

£24,600

Public Realm carried forward

£0

Total Available 2013 - 2015 ACF

£106,600

*Less LTP schemes

- £2,000

**Less Public Realm schemes

- £4,449

***Decommittment funds

+ £0

Remaining available balance

£100,151

LTP element remaining

£80,000

Public Realm element remaining

£20,151

Radford and Park Area Capital 2013 - 2015 Programme

Radford and Park LTP schemes

Location	Type	Councillor Prioritised / Area Committee Approved	Estimate	Estimated start date	Completed	Details
Forster Street	Traffic calming	Approved November 2013	£58,000			Proposed Traffic calming scheme along Forster Street to improve safety around Radford Primary School
Redoubt Street	Resurfacing	Approved November 2013	£29,121	25/1/14		Carriageway resurfacing works, including treatment to granite setts.
Faraday Road	Feasibility	Approved November 2013	£2,000			To address traffic management and safety concerns including Faraday Road / Derby Road junction
Johnson Road	Footpath	Delegated Authority 31 July 2013	£9,387	--	Yes	Resurfacing on left side from Cycle Road junction to end of cul-de-sac
Trafalgar Close / Beckenham Road	Lining	Delegated Authority 31 July 2013	£975			
Forster Street	Feasibility Study	Delegated Authority 31 July 2013	£2,000		Yes	Feasibility Study for traffic calming scheme
Radford	TRO	Delegated Authority 31 July 2013	£5,000			Unrestricted parking bays amendment order (Player Street, Beckenham Road, Wallan Street and Osborn Street)
Ben Street	Bollards & Tarmacing	Approved May 2013	£4,421		Yes	Install 6 new metal bollards and retarmac footpath at junction with Player Street

Total LTP schemes*

£110,904

Radford and Park Public Realm schemes

Location / Scheme	Type	Councillor Prioritised / Area Committee Approved	Estimate	Estimated start date	Completed	Details
Priority cleansing areas	Equipment	Prioritised 23 October 2013	£708			Replacement cleansing equipment for use on Radford Road and Alfreton Road
Fleet Close	Fencing	Prioritised October 2013	£250			Request from residents to complete the fencing by fencing up the existing gap
Canning Circus	Planters	Approved September 2013	£6,800			Planters for Canning Circus
Radford	Transfer	Approved September 2013	£14,475			Transfer of Public Realm funds to Berridge Ward in exchange for NCH environmental funds for 2011-12 and 2012-13
The Forest	Contribution	Approved May 2013	£20,000			

Total Public Realm schemes**

£42,233

Radford and Park Decommittments

Location	Type	Reason	Amount	Details
Previously decommitted schemes			£32,527	
Total Decommitted***			£32,527	
Total 2013-2015 LTP allocation			£128,000	
LTP carried forward from 2011-2013			£36,000	
2013 - 2014 Public Realm allocation			£38,400	
Public Realm carried forward			£74,211	
Total Available 2013 - 2015 ACF			£276,611	
<i>*Less LTP schemes</i>			- £110,904	
<i>**Less Public Realm schemes</i>			- £42,233	
<i>***Decommittment funds</i>			+ £32,527	
Remaining available balance			£156,001	
LTP element remaining			£81,623	
Public Realm element remaining			£74,378	